



# ***BECK FARMS & MCCOY CATTLE CO.***

**Charolais and Hereford Bull Sale**



**Wednesday**

***12<sup>th</sup> Annual Bull Sale***  
***FEBRUARY 24, 2021***  
**SALE FACILITY AT BECK FARMS, MILESTONE, SK - 2:00 PM**



# WELCOME TO THE SALE...

## BECK FARMS

Gary & Donna Beck  
Wade & Cynthia Beck  
Mark & Tami Beck  
Box 5, Lang, SK S0G 2W0  
Wade: 306-436-7458  
wcbeck@sasktel.net

Welcome to the 12th Annual Beck Farms and McCoy Cattle Co. Bull Sale. We are very excited to offer this set of bulls. This year, through all of the craziness going on in the world, our family has stayed well and worked together to manage and raise a great set of bulls.

We are extremely proud of the bull pen this year. The group has a solid consistency of power, performance and disposition (I walk through these pens every day and can vouch for the disposition). We feel the bulls are the best set we have raised to date. The main goal we work heavily towards is to raise bulls that are functional with calving ease for both commercial and purebred operations. We believe this year's offering meets the goal we strive for.

We invite you to come tour the bulls any time before the sale. The bulls are in their big pens and easily accessible for viewing. The mothers that raised the bulls are also available for viewing. Feel free to contact my Dad or Mason anytime to come view and enjoy some socially distanced hospitality and a dang good brownie made by me. If you have any questions, by all means text or call my Dad or brother.

Thank you to everyone that has supported our program throughout the years, it means a lot to us. Stay safe and we hope you can join us for our sale in some way!

### Jorja



Wade, Cynthia,  
Mason & Jorja



Mark, Tami, Kylie and Kaden Beck



Chad, Carrie, Emma, Megan & Kalla



Gary & Florence



The Nicholas Family  
Box 479, Milestone, SK S0G 3L0  
Chad: 306-436-7300  
Carrie: 306-436-7425

[www.mccoycattle.com](http://www.mccoycattle.com) | [cnicholas@mccoycattle.com](mailto:cnicholas@mccoycattle.com)

Welcome to our 12th Annual Bull Sale. The past year has definitely had a few challenges but there have definitely been some positives out of it as well. It has definitely made us appreciate where we live in the world. It has also helped to highlight the importance of agriculture globally and how important what we do every day is to the average consumer.

From a local south central Sask standpoint we were fortunate to receive some timely rain in 2020 that enabled us to grow adequate winter feed supplies and have a decent grazing year all in all. That being said we have all ended 2020 a bit short of moisture so hopefully we receive the precipitation between now and spring that many experts are predicting. Outlook for the cattle market over the next 3-5 years looks very bright as we look forward. There continues to be a large hole in world protein supply due to China losing a large percentage of their sow herd to African Swine Fever. This should ensure that we will see strong beef markets for a number of years.

The goal of the McCoy Hereford breeding program is to breed moderate framed, easy fleshing, maternally focused cattle that will be profitable in modern commercial crossbreeding operations. We strive to produce productive cattle on minimal inputs that have a solid balance between calving ease, efficient growth, and strong maternal attributes with heavy emphasis on udder quality and improved carcass value. We have ultrasounded our replacement females for 15 years and this has been very significant in terms of carcass value.

The Hereford breed has made great improvements over the past decade and we have been proud to be a part of that process. We are very passionate about the bulls we produce and feel they continue to create greater value for our customers every year. Feel free to call to discuss how our bulls can make you more profitable. If they can't, we welcome the opportunity to discuss why not as we hope it can make our breeding program stronger and more robust in the future.

Wade and I both look forward to your inquiries on our sale offerings. Please feel free to call us anytime as we always have time to talk bulls. It is impossible to predict what Covid rules will be in place on February 24 so we encourage you to visit the farm ahead of sale day at a time that is convenient for you to view the bulls.

Talk to you soon.

*Chad*



# FROM THE DESK AT TBAR...

Welcome to the 12th Annual Beck/McCoy Bull Sale, Wednesday, February 24, 2021 at the Beck Farms Headquarters, Milestone, Saskatchewan. The 2021 edition of this sire sourcing event presents the most uniform and powerful group of bulls from two breeds at one location on one day. Although the phrase "best ever" is an overused term, these two progressive breeding operations continue to source sires that have moved their programs forward and their broad base of repeat customers continue to benefit in replacement pastures and pocketbooks. The two programs are paralleled in many ways... optimal frame size, performance with depth and volume, yet maintaining calving ease with high maternal values.

The Charolais bulls are uniform in frame size and body type... deep, thick, soggy, with middle and top and hair... lots of hair. Whether you are a purebred breeder searching for your next herd sire or a commercial producer wanting to take advantage of more pounds at weaning, many selections are available for your scrutiny. Do not overlook the two-year old bulls... too young to use last year, they were saved for the 2021 sale... they can cover more cows and more ground.

The Hereford bulls are exciting... Chad will tell you "it is a neat pen of bulls!" It is difficult to find a set of Hereford bulls that offer so much uniformity and depth in type and kind... designed to add value to any purebred or commercial operation. Thick, easy fleshing, with lots of hair and testicle and for the most part calving ease specialists. These highly maternal sire prospects will make your heifers happy and you will keep every daughter no matter what color.

Take advantage of the "magic" of mating the two breeds... the most profitable cross in a commercial breeding program. Both operations are neighbors, minutes apart so you can preview both sets of bulls in one trip and it will be well worth the trip! Feel free to call the folks at Beck Farms or McCoy Cattle Co. and visit about their bulls and those that would fit your breeding intentions... they love to visit cattle.

During these times, feel free to call anyone on our T Bar C team to discuss or purchase any of the cattle offered. We have graded each individual and will be pleased to assist in a professional and confidential manner.

## Sale Management...

### Chris



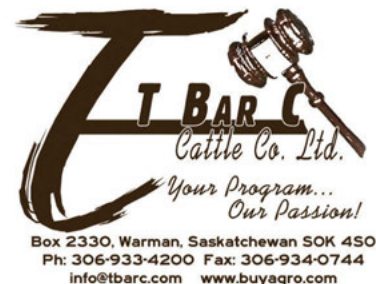
**Chris Poley**  
306.220.5006



**Shane Michelson**  
403.363.9973



**Ben Wright**  
519.374.3335



## General Information...

### Point of Sale...

Each animal becomes the risk of purchaser at time of sale.

### Free Wintering...

All bulls will be developed free of charge until June 1, 2021. A minimal charge will be applied should bulls need to be maintained beyond June 1.

### Breeding Guarantee...

We guarantee to provide a sound breeding bull capable of passing a semen test at 14 months of age. Any bull failing to be a satisfactory breeder will be replaced with a bull of equal value and quality, or a credit given towards purchase of another bull.

### Insurance...

Alameda Agencies, Bonnie Thompson 306-489-2258

### Announcements...

Errors in catalogue will be corrected by announcements from the block. Announcements will take precedence over any printed material.

## Hotel Accommodations...

### Microtel Inn & Suites...

88 Grace St., Weyburn, SK  
(306) 842-5700

### Holiday Inn Express & Suites...

4255 Albert St S. Regina, SK S4S 3R6  
(306) 789-5888

### Delivery...

Free delivery to central points in western Canada & Paris, Ontario. For bulls going to the U.S. we will cover export test and deliver to border.

### Sight Unseen Purchase Program...

While we will do our best to stage a near normal live auction and we encourage our customers to come view the bulls anytime before the sale, our sight unseen program is another great option. No one knows these bulls better than we do. we are more than willing to discuss the bulls with you and find ones that would work for your breeding program. When we deliver the bull, you must be 100% satisfied with your purchase or we will load the bull up and bring him home - no questions asked.



# BECK FARMS



**McCoy Cattle Co.**

## 12<sup>th</sup> Annual Bull Sale

**2:00 PM - Wednesday, February 24, 2021**

Beck Farms

Milestone, Saskatchewan

Offering **105** Bulls

**8** Charolais Two-Year-Olds

**52** Charolais Yearlings

**45** Hereford Yearlings

### *Sale Day Phone...*

Chad	306-436-7300 (C)
Carrie	306-436-7425 (C)
Wade	306-436-7458 (C)
Mason	639-440-7027 (C)
Jamie O'Shea	519-477-1238 (C)

### *Sale Staff...*

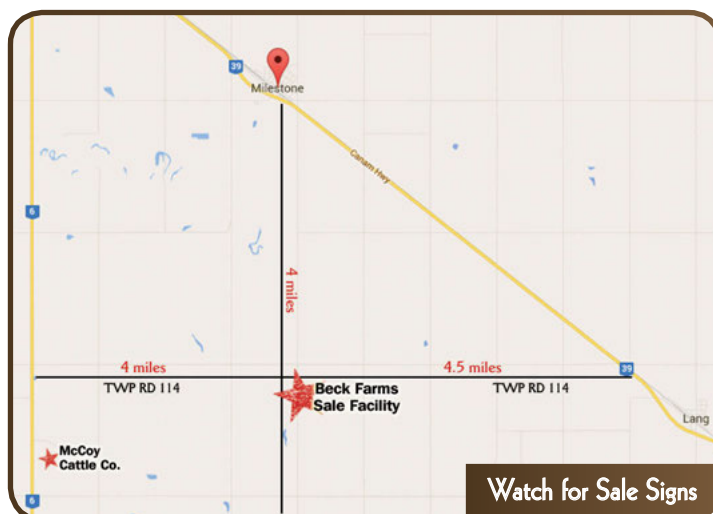
Auctioneer...

Chris Poley 306-220-5006 (C)

### *Ringside...*

Shane Michelson	403-363-9973 (C)
Nate Marin	306-869-7130 (C)
Helge By	306-536-4261 (C)
Ben Wright	519-374-3335 (C)

For service/information in French, please contact  
Cynthia Beck at 306-436-7354 or at [wbeck@sasktel.net](mailto:wbeck@sasktel.net)  
Pour le service ou l'information en français, svp contactez  
Cynthia Beck à 306-436-7354 ou à [wbeck@sasktel.net](mailto:wbeck@sasktel.net)



### *From Milestone...*

On east side of Milestone take Range Road 2192 4 miles south.  
Watch for signs!

### *Watch & Bid Online...*

Can't make it to the sale? **Watch & Bid Online.**

With DLMS you can Watch, Listen & Bid on your computer just like you were there with online bidding over the internet

**Instructions for Viewing And Bidding At the Sale**

Visit [www.dlms.ca](http://www.dlms.ca), Fill out the registration form located under registration and sign-up for your free user account to select a username and password.

**BIDDERS** - To be approved as a bidder, Log in and click BUYER APPROVAL tab, select the sale you are interested in bidding at and click sign up.

For more information or for help getting approved Call:  
Mark Shologan - 780-699-5082 or DLMS Purebred Team 780.991-3025

Direct Livestock Marketing Systems  
We're Making the Connection

**DLMS**  
[www.dlms.ca](http://www.dlms.ca)

To find an agent or sale near you today  
visit [www.dlms.ca](http://www.dlms.ca)

Purebred Sales • Daily Presort Sales  
Direct Off-farm Sales every Thursdays at 10:00 am

View the catalogue online at

[www.BuyAgro.com](http://www.BuyAgro.com) or [www.mccoycattle.com](http://www.mccoycattle.com)



## YEARLING BULLS

The yearling bulls in this year's sale spent the summer on native and tame pastures. Creep feed is put out in middle of August as an aid to help with the weaning process. They were weaned on September 27th and put on a TMR of silage, oats, straw and a protein supplement. As in the past, none of the yearling bulls will be semen tested before the sale. They will be testicular measurement and palpated by a licensed veterinarian. Semen testing will take place in either March or April as dictated by you the buyer. We keep lots of spare bulls. Spare bulls are available for your use in the case that something happens to the bull you purchase between sale day and turn out.

Beck Farms reserve the right to draw semen on any of the sale offering for in-herd use only. This will be at our expense and your convenience.

**RS**

DC/KCM *Marksman* E1145 PET

PMC765933 BECK 1145E FEBRUARY 6, 2017 POLLED

LT BLUEGRASS 4017 P  
**LT LEDGER 0332 P**  
LT BRENDA 6120 PLD

CJC TRADEMARK H45  
**MS TRADEMARK S6112**  
MS MIKEL P4162

LT ASSERTION 1277P  
LT PEARL'S BREEZE 2236 P  
LT RIO BRAVO 3181 P  
LT BRENDA'S EASE 3055PLD  
LHD ALI MARK T214  
CJC MS PERFECT F57  
LHD SUPREME H1140  
MS FERNMARK F679

CE	BW	WW	YW	MILK
4.5	0.4	72	129	11

In the spring of 2018, Mason and I travelled to Debruycker Charolais in Montana in search of different genetics. After travelling over 800 miles and sorting through over 600 bulls, our pick was Marksman. Sired by LT Ledger, Marksman may not be the outcross we were looking for but backed by an incredible Trademark daughter make him a potent breeding piece that will lead our program into the future. His sons in this years sale are standouts. 22 sons of Marksman sell this year.



DC/KCM MARKSMAN E1145



LOT 1 - 2056H

**LOT 1**

BECK'S *Hollywood* 2056H

PMC795455 BECK 2056H FEBRUARY 6, 2020 POLLED

LT LEDGER 0332 P  
**DC/KCM MARKSMAN E1145 PET**  
MS TRADEMARK S6112

LT BLUEGRASS 4017 P  
LT BRENDA 6120 PLD  
CJC TRADEMARK H45  
MS MIKEL P4162

BECK'S RICKY BOBBY 10S  
**BECK'S CHARISMA 66Y**  
BECK'S CHARISMA 89U

SPARROWS ALCATRAZ 18N  
BECK'S SASSY 11H  
SPARROWS AUTHENTIC 6S  
BECK'S CHARISMA 89R

Hollywood loves the camera but with a body like that who wouldn't. With an attractive build, Hollywood has the look paired with an impressive amount of shape and dimension and out of a 10 year old cow that has raised one of Mason's favourite show heifers several years back.

BW	205DW	ADJ 365	CE	BW	WW	YW	MILK
97	749	1387	5.3	0.0	50	97	15





**LOT 2-2002H**

## LOT 2

BECK'S *Venture* 2002H

PMC796367 BECK 2002H JANUARY 9, 2020 POLLED

LT LEDGER 0332 P

**DC/KCM MARKSMAN E1145 PET**  
MS TRADEMARK S6112

SPARROWS BRAXTON 519C

**BECK'S KEY 28F**  
BECK'S MISS RED KEY 28Y

LT BLUEGRASS 4017 P

LT BRENDA 6120 PLD  
CJC TRADEMARK H45  
MS MIKEL P4162  
WINN MANS SKAGGS 663X  
SPARROWS CASINA 121X  
SPARROWS PANAMA 826U  
BECK'S MISS RED KEY 37N

BW	205DW	ADJ 365	CE	BW	WW	YW	MILK
91	753	1481	7.9	-0.8	55	106	17

This powerhouse is one to see! He is a wide topped, explosive hipped herd sire prospect that is definitely one to add to your list if you're looking to add some pounds on your calves come fall.

## LOT 3

BECK'S *Governor* 2003H

PMC796698 BECK 2003H JANUARY 11, 2020 POLLED

LT LEDGER 0332 P

**DC/KCM MARKSMAN E1145 PET**  
MS TRADEMARK S6112

SPARROWS BRAXTON 519C

**BECK'S MARIE 49F**  
BECK'S MARIE 63C

LT BLUEGRASS 4017 P

LT BRENDA 6120 PLD  
CJC TRADEMARK H45  
MS MIKEL P4162  
WINN MANS SKAGGS 663X  
SPARROWS CASINA 121X  
STEPPLER ORCH 103A  
BECK'S MARIE 6P

BW	205DW	ADJ 365	CE	BW	WW	YW	MILK
94	865	1447	6.9	0.6	60	112	18

One of Jorja's favorites in the sale. Curly haired, smooth shouldered with increased performance, not to mention out of a first calf heifer that really put her all into this one.



**LOT 3 - 2003H**



**BECK'S MARIE 49F - DAM  
WITH BECK 2003H**



## LOT 4

### BECK'S *Demon* 2084H

PMC796729 BECK 2084H MARCH 8, 2020 POLLED

LT LEDGER 0332 P

**DC/KCM MARKSMAN E1145 PET**

MS TRADEMARK S6112

SPARROWS KINGSTON 139Y

**BECK'S TASSEL 27D**

BECK'S TASSEL 6Z

LT BLUEGRASS 4017 P

LT BRENDA 6120 PLD

CJC TRADEMARK H45

MS MIKEL P4162

WINN MANS LANZA 610S

SPARROWS DELIGHT 374P

SPARROWS ELDORADO 361L

BECK'S TASSEL 26X

BW	205DW	ADJ 365	CE	BW	WW	YW	MILK
98	768	1301	6.2	-0.3	55	105	16

A really unique made, younger bull calf here that fits right in with the top of our offering, he possesses a clean front end with added length of spine.



LOT 4 - 2084H

## LOT 5

### BECK'S *Stardom* 2083H

PMC796325 BECK 2083H MARCH 5, 2020 POLLED

LT LEDGER 0332 P

**DC/KCM MARKSMAN E1145 PET**

MS TRADEMARK S6112

STEPLER ORCH 103A

**BECK'S MIST 37D**

BECK'S MIST 51Z

LT BLUEGRASS 4017 P

LT BRENDA 6120 PLD

CJC TRADEMARK H45

MS MIKEL P4162

SPARROWS SEMINOLE 927W

STEPLER MISS 253U

SPARROWS PANAMA 826U

BECK'S MIST 29T

BW	205DW	ADJ 365	CE	BW	WW	YW	MILK
91	697	1206	6.1	2.2	53	104	13

Very similar in age and build to 27D, Princeton is extremely fluent on the move with an excellent temperament.



LOT 5 - 2083H

## LOT 6

### BECK'S *Emblem* 2059H

PMC796722 BECK 2059H FEBRUARY 7, 2020 POLLED

LT LEDGER 0332 P

**DC/KCM MARKSMAN E1145 PET**

MS TRADEMARK S6112

BECK'S CITATION 615D

**BECK'S FLAIR 26F**

BECK'S FLAIR 61D

LT BLUEGRASS 4017 P

LT BRENDA 6120 PLD

CJC TRADEMARK H45

MS MIKEL P4162

BECK'S BOUNTY 206Z

BECK'S GOLDEN GIRL 33B

STEPLER ORCH 103A

BECK'S FLAIR 41Y

BW	205DW	ADJ 365	CE	BW	WW	YW	MILK
89	764	1256	5.2	1.1	58	109	13

Emblem is another very complete, moderate framed Marksman son that we are very fond of for his excellent temperament and athleticism.



LOT 6 - 2059H





LOT 7 2023H

## LOT 7

### BECK'S *Revenant* 2023H

PMC796732 BECK 2023H JANUARY 21, 2020 POLLED

LT LEDGER 0332 P  
**DC/KCM MARKSMAN E1145 PET**  
MS TRADEMARK S6112

LT BLUEGRASS 4017 P  
LT BRENDA 6120 PLD  
CJC TRADEMARK H45  
MS MIKEL P4162

BECK'S CITATION 615D  
**BECK'S SHANIA 23F**  
BECK'S SHANIA 55D

BECK'S BOUNTY 206Z  
BECK'S GOLDEN GIRL 33B  
CEDARDALE BRILLIANCE 119B  
BECK'S SHANIA 42U

Starting out at 77 lbs. with an actual weaning weight of 815 lbs. and raised by a beautiful 1100 lb. Citation daughter that we think is going to become a rising star in our program. This fluent moving, soft sided Marksman son may be as intriguing as any we have ever raised.

BW	205DW	ADJ 365	CE	BW	WW	YW	MILK
77	778	1361	11.6	-3.9	54	96	14



BECK 23F - DAM





**BECK'S DISCO 9F**  
MATERNAL SISTER



**LOT 8 - 2018H**

## LOT 8

### BECK'S *Magnum* 2018H

PMC796332 BECK 2018H JANUARY 19, 2020 POLLED

LT LEDGER 0332 P  
**DC/KCM MARKSMAN E1145 PET**  
MS TRADEMARK S6112

SPARROWS KINGSTON 139Y  
**BECK'S DISCO 22D**  
BECK'S DISCO 26A

LT BLUEGRASS 4017 P  
LT BRENDA 6120 PLD  
CJC TRADEMARK H45  
MS MIKEL P4162  
WINN MANS LANZA 610S  
SPARROWS DELIGHT 374P  
SPARROWS PANAMA 826U  
BECK'S DISCO 12T

BW	205DW	ADJ365	CE	BW	WW	YW	MILK
92	787	1385	5.7	-0.1	56	108	16

Magnum has herd bull written all over him, one of the stoutest, soggiest bulls we have ever raised. He is also good on paper being in the 10th percentile for weaning and yearling weight. Magnum's maternal sister was Reserve Champion Female at CCYA in 2019 as well.

## LOT 9

### BECK'S *Polo* 2032H

PMC795758 BECK 2032H JANUARY 26, 2020 POLLED

LT LEDGER 0332 P  
**DC/KCM MARKSMAN E1145 PET**  
MS TRADEMARK S6112

SPARROWS BRAXTON 519C  
**BECK'S DISCO 35E**  
BECK'S DISCO 4Z

LT BLUEGRASS 4017 P  
LT BRENDA 6120 PLD  
CJC TRADEMARK H45  
MS MIKEL P4162  
WINN MANS SKAGGS 663X  
SPARROWS CASINA 121X  
SPARROWS ELDORADO 361L  
BECK'S DISCO 12X

BW	205DW	ADJ365	CE	BW	WW	YW	MILK
91	759	1350	8.4	-2.0	56	106	16

Check out this meat wagon! This larger framed Marksman son sure has a lot going for him being so sound and easy doing. Polo also comes from the Disco cow family like 2018H, which is one of the oldest cow families on the farm.



**LOT 9 - 2032H**





LOT 10 - 2070H

## LOT 10

BECK'S *Point* 2070H

PMC796314

BECK 2070H

FEBRUARY 16, 2020

POLLED

LT LEDGER 0332 P  
**DC/KCM MARKSMAN E1145 PET**  
MS TRADEMARK S6112

SPARROWS KINGSTON 139Y  
**BECK'S TIANNA 45D**  
BECK'S TIANNA 53Y

LT BLUEGRASS 4017 P  
LT BRENDA 6120 PLD  
CJC TRADEMARK H45  
MS MIKEL P4162  
WINN MANS LANZA 610S  
SPARROWS DELIGHT 374P  
ROLLIN ACRES WILL 12W  
BECK'S TIANNA 35T

BW	205DW	ADJ 365	CE	BW	WW	YW	MILK
109	818	1319	1.3	1.9	57	110	19

An extremely docile Marksman son that comes athletic, appealing and heavy middled. His maternal grandma is our donor cow, 53Y.



LOT 11 - 2006H

## LOT 11

BECK'S *Halo* 2006H

PMC796357

BECK 2006H

JANUARY 13, 2020

POLLED

LT LEDGER 0332 P  
**DC/KCM MARKSMAN E1145 PET**  
MS TRADEMARK S6112

SPARROWS BRAXTON 519C  
**BECK'S OMEGA 67F**  
BECK'S OMEGA 411X

LT BLUEGRASS 4017 P  
LT BRENDA 6120 PLD  
CJC TRADEMARK H45  
MS MIKEL P4162  
WINN MANS SKAGGS 663X  
SPARROWS CASINA 121X  
SPARROWS ALCATRAZ 18N  
BECK'S OMEGA 11U

BW	205DW	ADJ 365	CE	BW	WW	YW	MILK
87	770	1336	6.4	0.4	55	104	19

One of our larger framed Marksman sons that you really have to appreciate for his length of spine and flexibility on the move.



LOT 12 - 2001H

## LOT 12

BECK'S *Han Solo* 2001H

PMC796802

BECK 2001H

JANUARY 4, 2020

POLLED

LT LEDGER 0332 P  
**DC/KCM MARKSMAN E1145 PET**  
MS TRADEMARK S6112

BECK'S ORCH 511C  
**BECK'S SAGE 84F**  
BECK'S SAGE 4A

LT BLUEGRASS 4017 P  
LT BRENDA 6120 PLD  
CJC TRADEMARK H45  
MS MIKEL P4162  
STEPPLER ORCH 103A  
BECK'S OMEGA 64S  
SPARROWS ELDORADO 361L  
BECK'S SAGE 57Y

BW	205DW	ADJ 365	CE	BW	WW	YW	MILK
87	780	1281	7.5	-0.2	56	103	13

Check out this calving ease oriented Marksman son, 87 lb. birthweight, curly haired with an excellent foot underneath him.





**STEPLER MISS 201C**  
GRAND DAM TO LOT 13



**LOT 13 - 2011H**

## LOT 13

BECK'S *Astro* 2011H

PMC796672 BECK 2011H JANUARY 15, 2020 POLLED

LT LEDGER 0332 P  
**DC/KCM MARKSMAN E1145 PET**  
MS TRADEMARK S6112

SPARROWS BRAXTON 519C  
**BECK'S MISS 24F**  
STEPLER MISS 201C

LT BLUEGRASS 4017 P  
LT BRENDA 6120 PLD  
CJC TRADEMARK H45  
MS MIKEL P4162  
WINN MANS SKAGGS 663X  
SPARROWS CASINA 121X  
SPARROWS COPENHAGEN 210Z  
KCH ASHANTI 6R

BW	205DW	ADJ365	CE	BW	WW	YW	MILK
90	771	1248	9.8	-1.8	53	103	20

Another successful Marksman x Braxton mating here. Astro combines an excellent phenotype, length of spine and width of hip. Astro's granddam was a female that Kaden and Mason purchased from Stepler Farm's first female sale.

## LOT 14

BECK'S *Revamp* 2047H

PMC796723 BECK 2047H FEBRUARY 3, 2020 POLLED

LT LEDGER 0332 P  
**DC/KCM MARKSMAN E1145 PET**  
MS TRADEMARK S6112

BECK'S CITATION 615D  
**BECK'S STARLIGHT 35F**  
BECK'S STARLIGHT 50D

LT BLUEGRASS 4017 P  
LT BRENDA 6120 PLD  
CJC TRADEMARK H45  
MS MIKEL P4162  
BECK'S BOUNTY 206Z  
BECK'S GOLDEN GIRL 33B  
STEPLER ORCH 103A  
BECK'S STARLIGHT 29Y

BW	205DW	ADJ365	CE	BW	WW	YW	MILK
96	777	1399	6.2	1.0	59	108	15

A very unique Marksman son with an attractive front end, bold middle and an attitude that is hard to beat.



**LOT 14 - 2047H**





**LOT 15 - 2050H**

## LOT 15

BECK'S *Silence* 2050H

PMC795423 BECK 2050H FEBRUARY 3, 2020 POLLED TWIN

LT LEDGER 0332 P  
**DC/KCM MARKSMAN E1145 PET**  
MS TRADEMARK S6112

BECK'S RICKY BOBBY 10S  
**BECK'S TASSEL 358W**  
CHARDEL TASSEL 358N

LT BLUEGRASS 4017 P  
LT BRENDA 6120 PLD  
CJC TRADEMARK H45  
MS MIKEL P4162  
SPARROWS ALCATRAZ 18N  
BECK'S SASSY 11H  
SPARROWS COSSACK 11L  
CHARDEL TASSEL 701G

BW	Sept 27 WT	ADJ 365	CE	BW	WW	YW	MILK
83	755	1130	5.1	0.0	53	104	15

Moderate framed, hairy and stout. His dam also has consistently produced top end bull calves. She also has one of our lead off two year olds in the sale this year.



**LOT 16 - 2052H**

## LOT 16

BECK'S *Hayes* 2052H

PMC795409 BECK 2052H FEBRUARY 4, 2020 POLLED

LT LEDGER 0332 P  
**DC/KCM MARKSMAN E1145 PET**  
MS TRADEMARK S6112

SPARROWS ELDORADO 361L  
**LAE GOLDEN GIRL 8136U**  
BKE GOLDEN VENTURE 5F

LT BLUEGRASS 4017 P  
LT BRENDA 6120 PLD  
CJC TRADEMARK H45  
MS MIKEL P4162  
SPARROWS ALLIANCE 513G  
SPARROWS HEARTBREAK 261J  
MNE BOLD VENTURE 38D  
BKE POLLED GOLD 3D

BW	205DW	ADJ 365	CE	BW	WW	YW	MILK
87	716	1111	8.7	-2.7	56	99	12

Some serious cow power behind this one! His dam, 8136U, is the grandma of Beck's Tower who sold for \$26,000 to M.C. Quantock in 2017 as well as the great great grandma to Beck's Citation who sold for \$20,000 to Eric Trepanier, CK Sparrow Farms and Pro-Char Charolais in 2016. Like Jorja said, "this guy is short eared, but not short in being good!"



**LOT 17 - 2010H**

## LOT 17

BECK'S *Spokane* 2010H

PMC796350 BECK 2010H JANUARY 15, 2020 POLLED

LT LEDGER 0332 P  
**DC/KCM MARKSMAN E1145 PET**  
MS TRADEMARK S6112

SPARROWS BRAXTON 519C  
**BECK'S TASSEL 48F**  
BECK'S TASSEL 25T

LT BLUEGRASS 4017 P  
LT BRENDA 6120 PLD  
CJC TRADEMARK H45  
MS MIKEL P4162  
WINN MANS SKAGGS 663X  
SPARROWS CASINA 121X  
BECK'S REVIVAL 5F  
BECK'S TASSEL 4R

BW	205DW	ADJ 365	CE	BW	WW	YW	MILK
86	802	1246	8.4	-2.2	57	106	18

Spokane really shows why we love the Marksman x Braxton mating, this cross consistently stamps them the same, stout; good hair and packed full of red meat.



## LOT 18

### BECK'S *Homestead* 2012H

PMC795665 BECK 2012H JANUARY 15, 2020 POLLED

LT LEDGER 0332 P  
**DC/KCM MARKSMAN E1145 PET**  
MS TRADEMARK S6112

SPARROWS BRAXTON 519C  
**BECK'S ECHO 29E**  
BECK'S ECHO 68A

LT BLUEGRASS 4017 P  
LT BRENDA 6120 PLD  
CJC TRADEMARK H45  
MS MIKEL P4162  
WINN MANS SKAGGS 663X  
SPARROWS CASINA 121X  
SM ANCHOR Y124 P  
MERIT ECHO 7153T

BW	205DW	ADJ 365	CE	BW	WW	YW	MILK
80	736	1277	11.4	-3.0	48	89	19

Another long bodied, calving ease Marksman son coming from our Echo cow family that continually produces time and time again.



LOT 18 - 2012H

## LOT 19

### BECK'S *Record Year* 2020H

PMC796359 BECK 2020H JANUARY 20, 2020 POLLED

LT LEDGER 0332 P  
**DC/KCM MARKSMAN E1145 PET**  
MS TRADEMARK S6112

SPARROWS BRAXTON 519C  
**BECK'S CHARISMA 33F**  
BECK'S CHARISMA 19Y

LT BLUEGRASS 4017 P  
LT BRENDA 6120 PLD  
CJC TRADEMARK H45  
MS MIKEL P4162  
WINN MANS SKAGGS 663X  
SPARROWS CASINA 121X  
SPARROWS PANAMA 826U  
BECK'S CHARISMA 30T

BW	205DW	ADJ 365	CE	BW	WW	YW	MILK
91	749	1258	8.2	-1.0	53	101	16

Record Year provides a great calving ease option with an excellent foot, length of body and disposition, as Jorja calls him "a friendly guy."



LOT 19 - 2020H

## LOT 20

### BECK'S *Round Table* 2076H

PMC795526 BECK 2076H FEBRUARY 22, 2020 POLLED

LT LEDGER 0332 P  
**DC/KCM MARKSMAN E1145 PET**  
MS TRADEMARK S6112

STEPPLER ORCH 103A  
**BECK'S TASSEL 32C**  
BECK'S TASSEL 6Z

LT BLUEGRASS 4017 P  
LT BRENDA 6120 PLD  
CJC TRADEMARK H45  
MS MIKEL P4162  
SPARROWS SEMINOLE 927W  
STEPPLER MISS 253U  
SPARROWS ELDORADO 361L  
BECK'S TASSEL 26X

BW	205DW	ADJ 365	CE	BW	WW	YW	MILK
103	800	1237	6.0	2.2	62	115	10

One of our youngest bulls to sell. Mason showed Round Table's maternal sister as a cow in 2019 and she received many compliments. Round Table offers a very flexible, athletic build with a very clean front end.



LOT 20 - 2076H





**BECK'S CITATION 615D**

**RS**

BECK'S *Citation* 615D

PMC707627 BECK 615D JANUARY 16, 2016 POLLED

SPARROWS ELDORADO 361L  
**BECK'S BOUNTY 206Z**  
BECK'S DANCER 83X

SPARROWS HOMBRE 128Y  
**BECK'S GOLDEN GIRL 33B**  
BECK'S GOLDEN 9Z

SPARROWS ALLIANCE 513G  
SPARROWS HEARTBREAK 261J  
SPARROWS AUTHENTIC 6S  
STAUFFERS MS. DANCER 83N  
WINN MANS LANZA 610S  
SPARROWS ALLISON 133W  
SPARROWS ALCATRAZ 18N  
BECK'S GOLDEN GIRL 136X

CE	BW	WW	YW	MILK
9.3	-1.7	45	86	15

We kept an interest in our 2017 high seller and used him in our program. We are extremely happy with the results. The Citation bulls in the sale take a back seat to no one. Calving ease, eye appeal and hair best describes the Citations. As his beautifully uddered daughters come into production, it is apparent his influence will continue in our program for years to come.  
4 yearlings sired by Citation sell.



**LOT 21 - 2058H**

**LOT 21**

BECK'S *Frontier* 2058H

PMC795503 BECK 2058H FEBRUARY 7, 2020 POLLED

BECK'S BOUNTY 206Z  
**BECK'S CITATION 615D**  
BECK'S GOLDEN GIRL 33B

SPARROWS ELDORADO 361L  
BECK'S DANCER 83X  
SPARROWS HOMBRE 128Y  
BECK'S GOLDEN 9Z

BECK'S TITAN 818U  
**BECK'S GOLDEN GIRL 67A**  
LAE GOLDEN GIRL 8136U

SPARROWS AUTHENTIC 6S  
BECK'S MARIE 29R  
SPARROWS ELDORADO 361L  
BKE GOLDEN VENTURE 5F

This bold ribbed, easy doing herd bull has the skull structure and build to provide calving ease with some added performance later on. We are in love with Frontier's depth of body and hair coat. He also goes back to the 8136U cow as well.

BW	205DW	ADJ 365	CE	BW	WW	YW	MILK
107	792	1300	6.3	1.4	46	83	14



## LOT 22

### BECK'S *Classic* 2037H

PMC796342 BECK 2037H JANUARY 30, 2020 POLLED

BECK'S BOUNTY 206Z

**BECK'S CITATION 615D**

BECK'S GOLDEN GIRL 33B

CEDARDALE BRILLIANCE 119B

**BECK'S ECHO 70D**

BECK'S ECHO 68A

SPARROWS ELDORADO 361L

BECK'S DANCER 83X

SPARROWS HOMBRE 128Y

BECK'S GOLDEN 9Z

KEYS ALL STATE 149X

CEDARDALE SHADOW 69S

SM ANCHOR Y124 P

MERIT ECHO 7153T

BW	205DW	ADJ 365	CE	BW	WW	YW	MILK
88	672	1116	9.4	-1.2	37	72	15

Heifer bull alert! This stout, bold ribbed, smooth headed Citation son is the full brother to Beck's Source who walks at Brimmer Cattle Co.



LOT 22 - 2037H



BECK'S ECHO 70D - DAM

## LOT 23

### BECK'S *Reason* 2057H

MC795525 BECK 2057H FEBRUARY 6, 2020 HORNED

BECK'S BOUNTY 206Z

**BECK'S CITATION 615D**

BECK'S GOLDEN GIRL 33B

STEPPLE ORCH 103A

**BECK'S POSH 30C**

BECK'S POSH 5S

SPARROWS ELDORADO 361L

BECK'S DANCER 83X

SPARROWS HOMBRE 128Y

BECK'S GOLDEN 9Z

SPARROWS SEMINOLE 927W

STEPPLE MISS 253U

SPARROWS ALCATRAZ 18N

BECK'S POSH 18P

BW	205DW	ADJ 365	CE	BW	WW	YW	MILK
101	735	1211	5.7	1.6	42	82	14

Another broad hipped Citation son out of one of our favourite Orch daughters. 2057H possesses that classic Citation curly hair.



LOT 23 - 2057H

## LOT 24

### BECK'S *Thunder* 2008H

PMC796700 BECK 2008H JANUARY 14 2020 POLLED

BECK'S BOUNTY 206Z

**BECK'S CITATION 615D**

BECK'S GOLDEN GIRL 33B

SPARROWS BRAXTON 519C

**BECK'S MIST 36F**

BECK'S MIST 67C

SPARROWS ELDORADO 361L

BECK'S DANCER 83X

SPARROWS HOMBRE 128Y

BECK'S GOLDEN 9Z

WINN MANS SKAGGS 663X

SPARROWS CASINA 121X

BECK'S TITAN 818U

BECK'S MIST 29T

BW	205DW	ADJ 365	CE	BW	WW	YW	MILK
82	699	1232	11.5	-2.7	35	71	22

This attractive calving ease Citation son shows what we love about our Citations; wide hipped, clean front end and a great hair coat.



LOT 24 - 2008H



BECK'S MIST 36F - DAM





**LOT 25 - 2038H**

## LOT 25

### BECK'S *Homage* 2038H

PMC795603 BECK 2038H JANUARY 30, 2020 POLLED TWIN

BECK'S TITAN 818U  
**BECK'S LEGACY 552C**  
BECK'S EVA 196W

SPARROWS HOMBRE 128Y  
**BECK'S GOLDEN GIRL 35C**  
LAE GOLDEN GIRL 8136U

SPARROWS AUTHENTIC 6S  
BECK'S MARIE 29R  
BECK'S RICKY BOBBY 10S  
PLEASANT DAWN EVA 196H  
WINN MANS LANZA 610S  
SPARROWS ALLISION 133W  
SPARROWS ELDORADO 361L  
BKE GOLDEN VENTURE 5F

BW	Sept 27 WT	ADJ 365	CE	BW	WW	YW	MILK
82	730	1127	2.9	2.2	42	80	42

We recently purchased back our 2016 high seller, Beck's Legacy 552C. Built for longevity, Homage's grandsire walked our pasture until he was 10 years of age and his granddam is still producing at 13. Jorja calls this one "pretty eyes" for his appealing head structure and easy doing nature.



**LOT 26 - 2025H**

## LOT 26

### BECK'S *Oasis* 2025H

APPLIED FOR BECK 2025H JANUARY 21, 2020 POLLED

SPARROWS ELDORADO 361L  
**BECK'S BOUNTY 206Z**  
BECK'S DANCER 83X

BECK'S RICKY BOBBY 10S  
**BECK'S EVA 196W**  
PLEASANT DAWN EVA 196H

SPARROWS ALLIANCE 513G  
SPARROWS HEARTBREAK 261J  
SPARROWS AUTHENTIC 6S  
STAUFFERS MS. DANCER 83N  
SPARROWS ALCATRAZ 18N  
BECK'S SASSY 11H  
EVC HOTSHOT 50E  
PLEASANTDAWN SPORTEST96E

BW	205DW	ADJ 365	CE	BW	WW	YW	MILK
104	668	1176	-	-2.3	38	75	21

After raising our high seller in 2015 and 2016 we decided to flush 196W. These embryo transplant full brothers offer you a strong footed, wide topped package. Longevity built into these two.



**BECK'S BOUNTY 206Z - SIRE OF 26 & 27**

## LOT 27

### BECK'S *Applause* 2040H

APPLIED FOR BECK 2040H JANUARY 31, 2020 POLLED

BW	205DW	ADJ 365	CE	BW	WW	YW	MILK
96	721	1206	-	-2.3	38	75	21



**BECK'S LEGACY 552C - SIRE OF LOT 25  
& MATERNAL BROTHER OF 26 & 27**



PMC752756 DSY 275F JANUARY 22, 2018 POLLED

WINN MANS LANZA 610S  
**SPARROWS HACIENDA 407B**  
 SPARROWS DANA 521Z

SPARROWS DURANGO 585P  
 WINN MAN MERIT 036K  
 WINN MANS SKAGGS 663X  
 SPARROWS DANA 421W

SPARROWS THAILAND 253Z  
**STEPPLER MISS 367C**  
 STEPPLER MISS ALLISON 68Y

SPARROWS BIRMINGHAM 758T  
 SPARROWS HOMBRE 355W  
 SPARROWS SEMINOLE 927W  
 STEPPLER MISS DORA 12S

One of the two new sire groups is Stepler By Design. The By Designs are stylish, long bodied, good haired bulls. Extra length and extra growth seen in these calves throughout their lives. Calving ease is not a concern with these long, smooth made sires.

CE	BW	WW	YW	MILK
4.0	1.7	45	96	26

**LOT 28**BECK'S *Original* 2071H

APPLIED FOR BECK 2071H FEBRUARY 17, 2020 POLLED

SPARROWS HACIENDA 407B  
**STEPPLER BY DESIGN 275F**  
 STEPPLER MISS 367C

LT BLUE VALUE 7903 ET  
**BECK'S NADINE 5C**  
 BECK'S NADINE 69A

WINN MANS LANZA 610S  
 SPARROWS DANA 521Z  
 SPARROWS THAILAND 253Z  
 STEPPLER MISS ALLISON 68Y  
 LT BLUEGRASS 4017 P  
 LT UNLIMITED MAID 7184 P  
 CJC UNUSUAL Y798P  
 BECK'S NADINE 3U

BW	205DW	ADJ 365	CE	BW	WW	YW	MILK
102	711	1252	2.9	2.2	42	80	22

Original's picture speaks for itself. Out of an awesome Blue Value daughter that Jorja showed back in 2015 to be Reserve Champion Heifer Calf at CCYA. We are in love with this guy's build, so wide based and sound.

**LOT 29**BECK'S *Praise* 2066H

APPLIED FOR BECK 2066H FEBRUARY 13, 2020 POLLED

SPARROWS HACIENDA 407B  
**STEPPLER BY DESIGN 275F**  
 STEPPLER MISS 367C

ROLLIN ACRES WILL 12W  
**BECK'S TIANNA 53Y**  
 BECK'S TIANNA 35T

WINN MANS LANZA 610S  
 SPARROWS DANA 521Z  
 SPARROWS THAILAND 253Z  
 STEPPLER MISS ALLISON 68Y  
 PCFL ULTIMATE 14R  
 ROLLIN ACRES JULIE 17L  
 SPARROWS ALCATRAZ 18N  
 BECK'S TIANNA 46N

BW	205DW	ADJ 365	CE	BW	WW	YW	MILK
106	742	1308	-	1.9	42	88	23

Check out this powerhouse, the natural calf out of our 53Y donor. This guy has herd bull written all over him with superb muscling and shape.



BECK'S TIANNA 53Y - DAM



LOT 29 - 2066H





**LOT 30 - 2055H**

## LOT 30

BECK'S *Frost* 2055H

APPLIED FOR BECK 2055H FEBRUARY 5, 2020 POLLED

SPARROWS HACIENDA 407B  
**STEPPLER BY DESIGN 275F**  
STEPPLER MISS 367C

STEPPLER ORCH 103A  
**BECK'S SASSY 55C**  
BECK'S SASSY 14Z

WINN MANS LANZA 610S  
SPARROWS DANA 521Z  
SPARROWS THAILAND 253Z  
STEPPLER MISS ALLISON 68Y  
SPARROWS SEMINOLE 927W  
STEPPLER MISS 253U  
SPARROWS PANAMA 826U  
BECK'S SASSY 51R

BW	205DW	ADJ 365	CE	BW	WW	YW	MILK
113	769	1326	-	5.8	50	107	18

Frost is smooth shouldered, larger framed and ready to add profit to your next calf cheque.



**LOT 31 - 2077H**

## LOT 31

BECK'S *Agile* 2077H

APPLIED FOR BECK 2077H FEBRUARY 27, 2020 POLLED

SPARROWS HACIENDA 407B  
**STEPPLER BY DESIGN 275F**  
STEPPLER MISS 367C

SPARROWS HOMBRE 128Y  
**BECK'S MAUDE 2C**  
BECK'S MAUDE 33A

WINN MANS LANZA 610S  
SPARROWS DANA 521Z  
SPARROWS THAILAND 253Z  
STEPPLER MISS ALLISON 68Y  
WINN MANS LANZA 610S  
SPARROWS ALLISION 133W  
SPARROWS PANAMA 826U  
MERIT MAUDE 6287S

BW	205DW	ADJ 365	CE	BW	WW	YW	MILK
107	730	1305	-	1.9	47	96	21

Agile goes back to one of our favourite cows that we purchased out of the Merit Charolais dispersal. He is very comparable to Lot 30 in terms of shape and frame size being longer spined and larger framed.



**LOT 32 - 2081H**

## LOT 32

BECK'S *Molson* 2081H

APPLIED FOR BECK 2081H MARCH 4, 2020 POLLED

SPARROWS HACIENDA 407B  
**STEPPLER BY DESIGN 275F**  
STEPPLER MISS 367C

SPARROWS HOMBRE 128Y  
**BECK'S DISCO 22A**  
BECK'S DISCO 135X

WINN MANS LANZA 610S  
SPARROWS DANA 521Z  
SPARROWS THAILAND 253Z  
STEPPLER MISS ALLISON 68Y  
WINN MANS LANZA 610S  
SPARROWS ALLISION 133W  
SPARROWS PANAMA 826U  
BECK'S DISCO 35S

BW	205DW	ADJ 365	CE	BW	WW	YW	MILK
104	817	1205	-	1.9	50	101	20

Another younger bull to sell, backed by an excellent momma cow from our Disco cow family. He possesses the total package with excellent shape and capacity.



**BECK'S DISCO 22A - DAM**



**RS****SPARROWS *Preston* 862F**

PMC756741 SB 862F FEBRUARY 14, 2018 POLLED

CJC TRADEMARK H45

**BHD STOUT X41**

LHD MS TIBADO U844

ABC NUEVO

**SPARROWS BLANCHE 585W**

SPARROWS BLANCHE 585G

LHD ALI MARK T214

CJC MS PERFECT F57

TW TIBADO R2067

MS SLAMMER 9063 P

ABC MAGICO TORO

ABC LATORA GENACLEO

MNE EXCLUSIVE 17E

SPARROW'S BLANCHE 85E

CE	BW	WW	YW	MILK
5.1	1.6	48	82	23

After admiring the BHD Stout progeny for years, we bought a son in the spring of 2018. The Preston's are super sound with moderate birth weights. We have been extremely impressed with their growth and style. Some of our best heifer calves are sired by Preston. We anxiously look forward to a large group of calves to be born in 2021 sired by Preston.

**SPARROWS PRESTON 862F****LOT 33- 2098H****LOT 34****BECK'S *Press Release* 2098H**

APPLIED FOR BECK 2098H APRIL 7, 2020 POLLED

BHD STOUT X41

**SPARROWS PRESTON 862F**

SPARROWS BLANCHE 585W

CJC TRADEMARK H45

LHD MS TIBADO U844

ABC NUEVO

SPARROWS BLANCHE 585G

SPARROWS KINGSTON 139Y

**BECK'S KARLIE 19D**

BECK'S KARLIE 51T

WINN MANS LANZA 610S

SPARROWS DELIGHT 374P

WINN MANS THE GAME 102L

BECK'S KARLIE 385K

Press Release is an exciting young herd sire prospect. I mean what more is there to say, stout with a big foot and strong maternal traits. His maternal sibling is our lead off two year old.

BW	205DW	ADJ 365	CE	BW	WW	YW	MILK
92	842	1345	-	1.5	44	84	22





**LOT 34 - 2062H**

## LOT 34

BECK'S *Hoff* 2062H

APPLIED FOR BECK 2062H FEBRUARY 9, 2020 POLLED

BHD STOUT X41  
**SPARROWS PRESTON 862F**  
SPARROWS BLANCHE 585W

SPARROWS KINGSTON 139Y  
**BECK'S KEY 28E**  
BECK'S MISS RED KEY 28Y

CJC TRADEMARK H45  
LHD MS TIBADO U844  
ABC NUEVO  
SPARROWS BLANCHE 585G  
WINN MANS LANZA 610S  
SPARROWS DELIGHT 374P  
SPARROWS PANAMA 826U  
BECK'S MISS RED KEY 37N

BW	205DW	ADJ 365	CE	BW	WW	YW	MILK
102	789	1314	-	1.9	47	92	23

The picture here does not do Hoff justice. Hoff encompasses what we want to raise, complete made bulls that are built to last.



**LOT 35 - 2091H**

## LOT 35

BECK'S *Battle* 2091H

APPLIED FOR BECK 2091H MARCH 26, 2020 POLLED

BHD STOUT X41  
**SPARROWS PRESTON 862F**  
SPARROWS BLANCHE 585W

SPARROWS ALCATRAZ 18N  
**BECK'S GOLDEN 9Z**  
BECK'S GOLDEN GIRL 136X

CJC TRADEMARK H45  
LHD MS TIBADO U844  
ABC NUEVO  
SPARROWS BLANCHE 585G  
SPARROWS MATADOR 7K  
SPARROWS BARMAID 218H  
LT BLUEGRASS 4017 P  
LAE GOLDEN GIRL 8136U

BW	205DW	ADJ 365	CE	BW	WW	YW	MILK
96	816	1275	-	-0.6	45	79	21

Another March born with some incredible performance not to mention a stacked pedigree, as his dam is the maternal grandma to Citation.



**LOT 36 - 2096H**

## LOT 36

BECK'S *Prowler* 2096H

APPLIED FOR BECK 2096H APRIL 7, 2020 POLLED

BHD STOUT X41  
**SPARROWS PRESTON 862F**  
SPARROWS BLANCHE 585W

SPARROWS PANAMA 826U  
**BECK'S ANNE 42Y**  
MERIT ANNE 3191N

CJC TRADEMARK H45  
LHD MS TIBADO U844  
ABC NUEVO  
SPARROWS BLANCHE 585G  
LOPEZ  
SPARROWS DAISY MAY 67P  
SPARROWS ALLIANCE 513G  
MERIT ANNE 7052G

BW	205DW	ADJ 365	CE	BW	WW	YW	MILK
94	852	1336	-	3.1	47	88	16

A powerful April born bull that goes back to a cow we bought out of the Merit Dispersal. You really have to admire Prowler for how soggy made he is.



**RS****SPARROWS *Braxton* 519C**

PMC367500 SB 519C JANUARY 27, 2015 POLLED

MD ALI TRADE U1059

**WINN MANS SKAGGS 663X**

WINN MANS BEVERLY 663S

WINN MANS LANZA 610S

**SPARROWS CASINA 121X**

SPARROWS CASSINA 21U

CJC TRADEMARK H45

MC MS SILVERBOE M653

SPARROWS DURANGO 585P

WINN MANS BEVERLY 352N

SPARROWS DURANGO 585P

WINN MAN MERIT 036K

4-G RULER 6S

SPARROWS CASSINA 21S

CE	BW	WW	YW	MILK
13.2	-3.5	33	77	48

Braxton, year after year, continues to impress us and make a huge impact in our breeding program. He is a rare combination of unmatched calving ease, impressive growth, along with strong maternal traits. 12 yearlings and 1 two year old Braxton son sell.

**SPARROWS BRAXTON 519C****BECK 905G FULL BROTHER****BECK'S SASSY 33E****LOT 37 - 2027H****LOT 37****BECK'S *Testament* 2027H**

PMC795667 BECK 2027H JANUARY 23, 2020 POLLED

WINN MANS SKAGGS 663X

**SPARROWS BRAXTON 519C**

SPARROWS CASINA 121X

MD ALI TRADE U1059

WINN MANS BEVERLY 663S

WINN MANS LANZA 610S

SPARROWS CASSINA 21U

HIGH BLUFF CRAFTSMAN 112C

**BECK'S SASSY 33E**

BECK'S SASSY 24C

SCR TRIUMPH 213S

SOS GONNA GETCHA GOOD 128R

LT BLUE VALUE 7903 ET

BECK'S SASSY 24C

One of our lead off Braxton sons for this year. Excellent headed, stout with a great foot underneath him. Testament is the full brother to Beck's Acclaim who was our second high seller last year and was used in our AI program.

BW	205DW	ADJ 365	CE	BW	WW	YW	MILK
89	758	1364	11.5	-1.9	43	87	24





LOT 38 - 2048H



BECK'S SASSY 24C - DAM OF LOT 38  
& GRAND DAM OF LOT 37

## LOT 38

BECK'S *Haven* 2048H

PMC795599 BECK 2048H FEBRUARY 3, 2020 POLLED

WINN MANS SKAGGS 663X  
**SPARROWS BRAXTON 519C**  
SPARROWS CASINA 121X

LT BLUE VALUE 7903 ET  
**BECK'S SASSY 24C**  
BECK'S SASSY 13A

MD ALI TRADE U1059  
WINN MANS BEVERLY 663S  
WINN MANS LANZA 610S  
SPARROWS CASSINA 21U  
LT BLUEGRASS 4017 P  
LT UNLIMITED MAID 7184 P  
SPARROWS HOMBRE 128Y  
BECK'S SASSY 47Y

BW	205DW	ADJ 365	CE	BW	WW	YW	MILK
106	797	1314	8.9	0.6	50	96	22

Another noteworthy Braxton son that possesses an extremely clean look with added length. His maternal sister is the dam to Lot 37.

## LOT 39

BECK'S *Rave* 2054H

PMC795515 BECK 2054H FEBRUARY 5, 2020 POLLED

WINN MANS SKAGGS 663X  
**SPARROWS BRAXTON 519C**  
SPARROWS CASINA 121X

SM ANCHOR Y124 P  
**BECK'S CHARISMA 17B**  
BECK'S CHARISMA 19Y

MD ALI TRADE U1059  
WINN MANS BEVERLY 663S  
WINN MANS LANZA 610S  
SPARROWS CASSINA 21U  
BHD ROCK U827  
SM SID'S CIGAR T70 P ET  
SPARROWS PANAMA 826U  
BECK'S CHARISMA 30T

BW	205DW	ADJ 365	CE	BW	WW	YW	MILK
109	794	1246	5.8	2.4	43	89	22

Backed by a no miss cow who has consistently produced top end bulls. Rave brings an exciting look, heavy haired with an exceptional build.



LOT 39 - 2054H



## LOT 40

BECK'S *Ace* 2015H

PMC796720 BECK 2015H JANUARY 18, 2020 POLLED

WINN MANS SKAGGS 663X  
**SPARROWS BRAXTON 519C**  
SPARROWS CASINA 121X

BECK'S CITATION 615D  
**BECK'S OMEGA 17F**  
BECK'S OMEGA 54D

MD ALI TRADE U1059  
WINN MANS BEVERLY 663S  
WINN MANS LANZA 610S  
SPARROWS CASSINA 21U  
BECK'S BOUNTY 206Z  
BECK'S GOLDEN GIRL 33B  
STEPPLER ORCH 103A  
BECK'S OMEGA 11U

BW	205DW	ADJ 365	CE	BW	WW	YW	MILK
89	762	1222	10.3	-1.4	40	84	24

An extremely attractive, calving ease Braxton son that we love for his expressive movement and dimension.



LOT 40 - 2015H

## LOT 41

BECK'S *Caviar* 2044H

PMC795528 BECK 2044H FEBRUARY 1, 2020 POLLED

WINN MANS SKAGGS 663X  
**SPARROWS BRAXTON 519C**  
SPARROWS CASINA 121X

STEPPLER ORCH 103A  
**BECK'S INTRIGUE 45C**  
BECK'S INTRIGUE 102X

MD ALI TRADE U1059  
WINN MANS BEVERLY 663S  
WINN MANS LANZA 610S  
SPARROWS CASSINA 21U  
SPARROWS SEMINOLE 927W  
STEPPLER MISS 253U  
SPARROWS PANAMA 826U  
BECK'S INTRIGUE 2S

BW	205DW	ADJ 365	CE	BW	WW	YW	MILK
100	705	1246	7.8	2.6	40	90	20

Caviar has an exceptional amount of capacity and appeal. Caviar is cut from the Braxton mold; moderate birth, stout made with good hair.



LOT 41 - 2044H

## LOT 42

BECK'S *Warrior* 2033H

PMC795768 BECK 2033H JANUARY 27, 2020 POLLED

WINN MANS SKAGGS 663X  
**SPARROWS BRAXTON 519C**  
SPARROWS CASINA 121X

LT SUNDANCE 2251 PLD  
**BECK'S FANNY 56E**  
BECK'S FANNY 39A

MD ALI TRADE U1059  
WINN MANS BEVERLY 663S  
WINN MANS LANZA 610S  
SPARROWS CASSINA 21U  
LT LEDGER 0332 P  
LT BALLET 9219 POLLED  
SPARROWS HOMBRE 128Y  
BECK'S FANNY 9Y

BW	205DW	ADJ 365	CE	BW	WW	YW	MILK
89	721	1343	10.5	-1.5	41	89	24

Another Braxton son that has not disappointed. An excellent calving ease option with an 89 lb. birth weight out of a cow that still carries some serious performance. Warrior is very comparable to Lot 41 in frame size and appearance.



LOT 42 - 2033H





**LOT 43 - 2042H**



**BECK 7C - MATERNAL  
SISTER TO LOT 43**



**LOT 44 - 2045H**



**LOT 45 - 2004H**



**BECK'S CHARISMA 16F - DAM**

## LOT 43

BECK'S *Ascend* 2042H

MC795507 BECK 2042H FEBRUARY 1, 2020 HORNED

WINN MANS SKAGGS 663X  
**SPARROWS BRAXTON 519C**  
SPARROWS CASINA 121X

SM ANCHOR Y124 P  
**BECK'S ECHO 68A**  
MERIT ECHO 7153T

MD ALI TRADE U1059  
WINN MANS BEVERLY 663S  
WINN MANS LANZA 610S  
SPARROWS CASSINA 21U  
BHD ROCK U827  
SM SID'S CIGAR T70 P ET  
ABC CAJA QUEBRADA  
MERIT ECHO 3109N

BW	205DW	ADJ 365	CE	BW	WW	YW	MILK
109	792	1260	3.6	3.0	45	89	24

Our lead off horned bull this year coming from our Echo cow family, Ascend is the total package; easy fleshing with an excellent build.

## LOT 44

BECK'S *Jubilee* 2045H

MC795436 BECK 2045H FEBRUARY 2, 2020 HORNED

WINN MANS SKAGGS 663X  
**SPARROWS BRAXTON 519C**  
SPARROWS CASINA 121X

SPARROWS PANAMA 826U  
**BECK'S PRINCESS 10Y**  
BECK'S PRINCESS 21T

MD ALI TRADE U1059  
WINN MANS BEVERLY 663S  
WINN MANS LANZA 610S  
SPARROWS CASSINA 21U  
LOPEZ  
SPARROWS DAISY MAY 67P  
SPARROWS ALCATRAZ 18N  
MANN PRINCESS 802H

BW	205DW	ADJ 365	CE	BW	WW	YW	MILK
79	741	1250	12.2	-3.0	35	78	24

Jubilee combines a 79 lb; birth weight, curly hair and a long body to bring you an ideal calving ease herd sire.

## LOT 45

BECK'S *Grindstone* 2004H

MC796726 BECK 2004H JANUARY 12, 2020 HORNED

WINN MANS SKAGGS 663X  
**SPARROWS BRAXTON 519C**  
SPARROWS CASINA 121X

BECK'S CITATION 615D  
**BECK'S CHARISMA 16F**  
BECK'S CHARISMA 4D

MD ALI TRADE U1059  
WINN MANS BEVERLY 663S  
WINN MANS LANZA 610S  
SPARROWS CASSINA 21U  
BECK'S BOUNTY 206Z  
BECK'S GOLDEN GIRL 33B  
SPARROWS KINGSTON 139Y  
BECK'S CHARISMA 17B

BW	205DW	ADJ 365	CE	BW	WW	YW	MILK
83	659	1152	12.4	-2.6	32	73	26

Starting out at 83 lbs. Grindstone has a lot to offer, coming from one of our favorite cow families. This moderate framed, calving ease bull will work for you.



## LOT 46

### BECK'S *Bronze* 2016H

PMC795598 BECK 2016H JANUARY 18, 2020 POLLED

WINN MANS SKAGGS 663X  
**SPARROWS BRAXTON 519C**  
SPARROWS CASINA 121X

LT BLUE VALUE 7903 ET  
**BECK'S JEZZY 14C**  
BECK'S JEZZY 28A

MD ALI TRADE U1059  
WINN MANS BEVERLY 663S  
WINN MANS LANZA 610S  
SPARROWS CASSINA 21U  
LT BLUEGRASS 4017 P  
LT UNLIMITED MAID 7184 P  
SPARROWS HOMBRE 128Y  
BECK'S JEZZY 18N

BW	Sept 27 WT	ADJ 365	CE	BW	WW	YW	MILK
87	805	1140	10.8	-1.6	44	83	22

Bronze and Sugar are very similar twin brothers with heavy hair coats, clean calving ease front ends and both track well on the move.

## LOT 47

### BECK'S *Sugar* 2017H

PMC804209 BECK 2017H JANUARY 18, 2020 POLLED

BW	Sept 27 WT	ADJ 365	CE	BW	WW	YW	MILK
86	800	1190	10.8	-1.5	44	83	22

## LOT 48

### BECK'S *Cadillac* 2024H

PMC796365 BECK 2024H JANUARY 22, 2020 POLLED

WINN MANS SKAGGS 663X  
**SPARROWS BRAXTON 519C**  
SPARROWS CASINA 121X

BECK'S CITATION 615D  
**BECK'S PINECONE 96F**  
BECK'S PINECONE 22Y

MD ALI TRADE U1059  
WINN MANS BEVERLY 663S  
WINN MANS LANZA 610S  
SPARROWS CASSINA 21U  
BECK'S BOUNTY 206Z  
BECK'S GOLDEN GIRL 33B  
CURTIS WALLACE 141H  
CHARDEL PINECONE 347N

BW	205DW	ADJ 365	CE	BW	WW	YW	MILK
90	677	1243	7.0	-1.2	37	77	25

This heavy haired, structurally correct Braxton son didn't picture quite as we would've liked him to but he will welcome your visit to come see him at the farm!

## LOT 49

### BECK'S *Proud* 2060H

APPLIED FOR BECK 2060H FEBRUARY 8, 2020 POLLED

SPARROWS BRAXTON 519C  
**BECK'S RAZZLE 818F**  
BECK'S JAZZ 55A

BECK'S ORCH 511C  
**BECK'S GOLDEN GIRL 100F**  
BECK'S GOLDEN GIRL 13Z

WINN MANS SKAGGS 663X  
SPARROWS CASINA 121X  
CJC UNUSUAL Y798P  
BECK'S JAZZ 336X  
STEPPLER ORCH 103A  
BECK'S OMEGA 64S  
SPARROWS PANAMA 826U  
LAE GOLDEN GIRL 8136U

BW	205DW	ADJ 365	CE	BW	WW	YW	MILK
91	731	1272	-	0.5	38	83	17

A calving ease Braxton grandson out of a May born two year old. His mother is a maternal sister to Beck's Tower who works at MC Quantock and Horseshoe E Charolais.



LOT 46 - 2016H



LOT 47 - 2017H



LOT 48 - 2024H



LOT 49 - 2060H





LOT 50 - 2069H

## LOT 50

BECK'S *Mint* 2069H

PMC795544 BECK 2069H FEBRUARY 15, 2020 POLLED

WCR KINGSBURY 116P  
**RBM KINGSBURY D28**  
RBM TROJAN Z33

SPARROWS PANAMA 826U  
**BECK'S OMEGA 47C**  
BECK'S OMEGA 3Z

EATONS VISIONARY 2044P  
WCR MISS POWEREDGE 9132 P  
EC NO DOUBT 2022P  
RBM CIGAR 2168  
LOPEZ  
SPARROWS DAISY MAY 67P  
SPARROWS ELDORADO 361L  
BECK'S OMEGA 411X

BW	205DW	ADJ 365	CE	BW	WW	YW	MILK
96	711	1317	7.2	0.8	46	93	16

Mint is an extremely powerful outcross option. His dam is one of our favourite Panama daughters.



LOT 51 - 2078H

## LOT 51

BECK'S *Guinness* 2078H

PMC795600 BECK 2078H FEBRUARY 25, 2020 POLLED

WCR KINGSBURY 116P  
**RBM KINGSBURY D28**  
RBM TROJAN Z33

STEPPLER ORCH 103A  
**BECK'S XANA 27C**  
SCF XANA 60X

EATONS VISIONARY 2044P  
WCR MISS POWEREDGE 9132 P  
EC NO DOUBT 2022P  
RBM CIGAR 2168  
SPARROWS SEMINOLE 927W  
STEPPLER MISS 253U  
REPAIR  
PCFL QUICHERI 84L

BW	205DW	ADJ 365	CE	BW	WW	YW	MILK
93	724	1201	8.6	1.1	40	77	19

Guinness is a high performing, calving ease Kingsbury son with an excellent hair coat.



LOT 52 - 2026H

## LOT 52

BECK'S *Breeze* 2026H

PMC795519 BECK 2026H JANUARY 23, 2020 POLLED

LT RUSHMORE 8060 PLD  
**LT AFFINITY 6221 PLD**  
LT ATHENA 1247

STEPPLER ORCH 103A  
**BECK'S TASSEL 31C**  
BECK'S TASSEL 333U

LT RIO BRAVO 3181 P  
LT BRENDA'S EASE 3055PLD  
WINN MANS LANZA 610S  
LT SILVER ATHENA 7123 P  
SPARROWS SEMINOLE 927W  
STEPPLER MISS 253U  
BECK'S RICKY BOBBY 10S  
CHARDEL TASSEL 333N

BW	205DW	ADJ 365	CE	BW	WW	YW	MILK
90	721	1201	9.7	-1.5	38	78	22

Our only Affinity son to sell this year. Affinity has seen increased use here for his extreme calving ease. Breeze is one we are very proud of that has true heifer bull material, out of an excellent Orch daughter that originates from the Tassel cow family and Kylie showed several years back.









**LOT 53 - 9110G**

**LOT 53**

BECK'S *Octane* 9110G

PMC804210 BECK 9110G SEPTEMBER 2, 2019 POLLED

LT LEDGER 0332 P  
**DC/KCM MARKSMAN E1145 PET**  
MS TRADEMARK S6112

LT BLUEGRASS 4017 P  
LT BRENDA 6120 PLD  
CJC TRADEMARK H45  
MS MIKEL P4162

SM ANCHOR Y124 P  
**BECK'S JENNA 61A**  
BECK'S JENNA 32W

BHD ROCK U827  
SM SID'S CIGAR T70 P ET  
BECK'S RICKY BOBBY 10S  
BECK'S JENNA 32C

After a bull wreck a couple years ago we experimented breeding a couple cows to calve in the fall and we are sure glad we did! Octane commands your attention combining an ideal character, muscle expression and attractiveness. His mother also raised our high selling two year old bull last year that went to McCracken Charolais in Wyoming.

BW	Jan 4 WT	CE	BW	WW	YW	MILK
89	1560	2.2	2.5	57	105	15

## TWO YEAR OLD BULLS

This year's group of two year olds were selected for the 2021 sale in the spring of 2019. These are the best bulls of the youngest bulls born in the spring of 2019. They were pastured together in 2019 on native grass. They were weaned late October 2019 and wintered on a TMR of silage, straw and a limited amount of oats. They were summered on grass in 2020, brought in the end of October and are being wintered on a TMR of silage, oats and straw. Buy these virgin ranch raised bulls with confidence. All two year olds will be semen tested before the sale.

All Beck Farms bulls will have received two shots of Fusogard for foot rot before they are delivered.





## LOT 54

BECK'S *Wish* 9102G

PMC773249 BECK 9102G MARCH 16, 2019 POLLED

WCR KINGSBURY 116P  
**RBM KINGSBURY D28**  
RBM TROJAN Z33

BECK'S RICKY BOBBY 10S  
**BECK'S TASSEL 358W**  
CHARDEL TASSEL 358N

EATONS VISIONARY 2044P  
WCR MISS POWEREDGE 9132 P  
EC NO DOUBT 2022P  
RBM CIGAR 2168  
SPARROWS ALCATRAZ 18N  
BECK'S SASSY 11H  
SPARROWS COSSACK 11L  
CHARDEL TASSEL 701G

BW	Jan 4 WT	CE	BW	WW	YW	MILK
112	1975	4.7	1.6	43	88	19

Maternal sibling to Lot 15. This high performing Kingsbury son has a lot to offer; stout made, great foot and an awesome temperament.



LOT 54 - 9102G

## LOT 55

BECK'S *Warrior* 9101G

PMC773247 BECK 9101G MARCH 15, 2019 POLLED

WCR KINGSBURY 116P  
**RBM KINGSBURY D28**  
RBM TROJAN Z33

STEPPLER ORCH 103A  
**BECK'S STARLIGHT 25C**  
BECK'S STARLIGHT 72Y

EATONS VISIONARY 2044P  
WCR MISS POWEREDGE 9132 P  
EC NO DOUBT 2022P  
RBM CIGAR 2168  
SPARROWS SEMINOLE 927W  
STEPPLER MISS 253U  
ROLLIN ACRES WILL 12W  
BECK'S STARLIGHT 22T

BW	Jan 4 WT	CE	BW	WW	YW	MILK
107	1750	4.3	3.3	45	89	19

Another big, stretchy two year old bull that has an extremely clean front end.



LOT 55 - 9101G





**LOT 56 - 9106G**

## LOT 56

BECK'S *Arch* 9106G

SMC804211 BECK 9106G APRIL 10, 2019 SCURRED

STEPLER ORCH 103A  
**BECK'S ORCH 511C**  
BECK'S OMEGA 64S

SPARROWS HOMBRE 128Y  
**BECK'S SASSY 42C**  
BECK'S SASSY 51R

SPARROWS SEMINOLE 927W  
STEPLER MISS 253U  
SPARROWS ALCATRAZ 18N  
BECK'S OMEGA 11N  
WINN MANS LANZA 610S  
SPARROWS ALLISION 133W  
WINN MANS THE GAME 102L  
BECK'S SASSY 11H

BW	Jan 4 WT	CE	BW	WW	YW	MILK
105	1750	2.3	4.2	43	90	15

Check out this guy, he will put some put into your calf, so thick, stout and outcross



**LOT 57 - 9103G**

## LOT 57

BECK'S *Dancer* 9103G

MC773250 BECK 9103G MARCH 28, 2019 HORNED

WINN MANS SKAGGS 663X  
**SPARROWS BRAXTON 519C**  
SPARROWS CASINA 121X

CJC UNUSUAL Y798P  
**BECK'S DANCER 54A**  
BECK'S DANCER 83X

MD ALI TRADE U1059  
WINN MANS BEVERLY 663S  
WINN MANS LANZA 610S  
SPARROWS CASSINA 21U  
LHD DISTINCTIVE T760 P  
CJC MS ICE R2094  
SPARROWS AUTHENTIC 6S  
STAUFFERS MS. DANCER 83N

BW	Jan 4 WT	CE	BW	WW	YW	MILK
83	1605	13.9	-4.2	28	60	26

Calving ease two year old bull here, backed by a fantastic mother cow.



**LOT 58 - 9107G**

## LOT 58

BECK'S *Humble* 9107G

APPLIED FOR BECK 9107G APRIL 15, 2019 POLLED

LT LEDGER 0332 P  
**DC/KCM MARKSMAN E1145 PET**  
MS TRADEMARK S6112

SPARROWS MONACO 487B  
**STEPLER MISS 162D**  
STEPLER MISS MOXIE 162W

LT BLUEGRASS 4017 P  
LT BRENDA 6120 PLD  
CJC TRADEMARK H4S  
MS MIKEL P4162  
ABC VAQUERO Z235  
SPARROWS LA QUINTA 10W  
SPARROWS BERLIN 30M  
STEPLER MISS MOXIE 126S

BW	Jan 4 WT	CE	BW	WW	YW	MILK
91	1605	-	-	-	-	-

Out of a cow Mason purchased from Stepler Farms, this calving ease two year old bull has many appealing features like an awesome foot and front end.



## LOT 59

BECK'S *Wrangler* 9105G

MC773252 BECK 9105G APRIL 5, 2019 HORNED

STEPLER ORCH 103A  
**BECK'S ORCH 511C**  
BECK'S OMEGA 64S

BECK'S RICKY BOBBY 10S  
**BECK'S DISCO 157X**  
BECK'S JETTA 57L

SPARROWS SEMINOLE 927W  
STEPLER MISS 253U  
SPARROWS ALCATRAZ 18N  
BECK'S OMEGA 11N  
SPARROWS ALCATRAZ 18N  
BECK'S SASSY 11H  
BECK'S LINK 23J  
BECK'S DISCO LADY 9C

BW	Jan 4 WT	CE	BW	WW	YW	MILK
95	1625	7.0	0.5	30	69	18

An extremely long bodied, horned bull that is out of the closest descendant to Disco Lady who started our Disco cow family.



LOT 59 - 9105G



LOT 60 - 9104H



## LOT 60

BECK'S *Paradise* 9104H

PMC773251 BECK 9104G MARCH 30, 2019 POLLED

STEPLER ORCH 103A  
**BECK'S ORCH 511C**  
BECK'S OMEGA 64S

SPARROWS SEMINOLE 927W  
STEPLER MISS 253U  
SPARROWS ALCATRAZ 18N  
BECK'S OMEGA 11N

SPARROWS KINGSTON 139Y  
**BECK'S KARLIE 19D**  
BECK'S KARLIE 51T

WINN MANS LANZA 610S  
SPARROWS DELIGHT 374P  
WINN MANS THE GAME 102L  
BECK'S KARLIE 385K

What better way to wrap up our catalogue offering than with this guy! Paradise offers an outcross pedigree, clean front end and an athletic build. His dam gets it done also producing Lot 34 who we are very excited about. Paradise's sire, 511C, has several daughters working in our herd that we really admire.

BW	Jan 4 WT	CE	BW	WW	YW	MILK
96	1825	1.5	4.3	40	87	18



# ***COVID-19 SAFETY PROTOCOLS***

We are doing our best to consider the health and safety of all of our valued customers and their families. We appreciate that farming is an essential service and our customers have cattle that need to be bred. The one thing that we are certain of, there will be a bull sale, and we will do our best to accommodate our customers to ensure they have a seamless purchasing experience.

It is important to note, because the sale is not until February, it is impossible to predict what the state of the pandemic response will be in Saskatchewan at that time, including types of restrictions that may be in place. We will be following the evolution of the guidelines carefully.

Beck and McCoy will ask that our customers in attendance follow all standard public health guidances.

We will have cattle available for appraisal from now until sale day to assist in reducing sale day traffic. We will be having an open house February 22 and 23 at the sale site. Chad, Carrie, Wade, and Mason will all be on hand to answer any questions and take you through the cattle.

Online bidding will be available at DLMS.ca – it is required to register for a user account to purchase online.

We do offer a sight unseen purchase program, and can arrange someone onsite to look after your bidding.

Beck and McCoy will have a number of sale day phones available, and we will be happy to arrange for you to be on the phone during the lots you are interested in.

If you have a working relationship with one of our sales representatives, we encourage you to utilize their services.

Please do not attend the sale if you feel unwell.

***CAN'T MAKE THE SALE?  
WATCH AND BID ONLINE***

**Internet Bidding Available**

**D | L | M | S**  
*www.dlms.ca*

**For more information call DLMS:  
Mark Shologan 780.699.5082 or  
DLMS Purebred Team 780.991.3025**





The Matrix sons represent our largest sire group in the 2021 sale and for good reason. We continue to be pleased with our decision to use Matrix heavily the past few years. The Matrix calves are moderate at birth and are born with lots of vigour yet exhibit adequate growth both at side of their dam and post weaning. We feel the Matrix sons will produce an ideal type of beef female that so many of our customers are striving for. Matrix is a trait leader for calving ease, birthweight and teat score. Homozygous Polled.



**REF SIRE**

MCCOY 719T *Matrix* ET 30E DLF HYF IEF MSUDF

C03039769 ZTM 30E FEBRUARY 4, 2017 POLLED

CE	BW	WW	YW	MILK	TM	REA	MARB
10.8	-1.0	51.2	79.3	24.3	49.9	0.07	0.07

## LOT 61

MCCOY 30E *Laser* 59H

C03073352 KJN 59H FEBRUARY 17, 2020 POLLED

TH 122 71I VICTOR 719T DLF HYF IEF MDF  
**MCCOY 719T MATRIX ET 30E** DLF HYF IEF MSUDF  
 MCCOY P20 ZENA 1B DLF HYF IEF

MCCOY 70Y SKYFALL 53A DLF HYF IEF  
**MCCOY 53A BILLIE JEAN 144F**  
 TWIN-VIEW 99W BILLIE JEAN 19C

DRF JWR PRINCE VICTOR 71I  
 KBCR 19D DOMINETTE 122 DLF IEF  
 SHF PROGRESS P20  
 MCCOY 23U ZENA 142Z  
 JDH 117R EQUITY 70Y ET DLF HYF IEF  
 MCCOY 25M ALISON 64W DLF HYF IEF MSUDF  
 MCCOY 30N APPLAUSE ET 99W DLF HYF IEF MSUDF  
 TWIN-VIEW 39S BOBBY JOE 6W

CE	BW	ADJ WW	ADJ YW	CE	BW	WW	YW	MILK	REA	MARB
U	78	644	1082	8.6	0.6	49.2	75.9	26.6	51.2	0.11

59H is a long bodied, attractive, good haired Matrix son that I find is catching my eye a bit more each time I am in the pen. Lots of calving ease here and should leave some strong females.

*Recommended for heifers.*



LOT 61 - 59H

## LOT 62

MCCOY 30E *Feature* 22H

C03072557 ZTM 22H FEBRUARY 7, 2020 POLLED

TH 122 71I VICTOR 719T DLF HYF IEF MDF  
**MCCOY 719T MATRIX ET 30E** DLF HYF IEF MSUDF  
 MCCOY P20 ZENA 1B DLF HYF IEF

ANL C HART100TAH0E 86 ET 23B DLF HYF IEF MSUDF MDF  
**MCCOY 23B MAGGIE ET 34F** DLF HYF IEF  
 WALKER DRF JH LASS W193 17U338

DRF JWR PRINCE VICTOR 71I  
 KBCR 19D DOMINETTE 122 DLF IEF  
 SHF PROGRESS P20  
 MCCOY 23U ZENA 142Z  
 SHF TAH0E R117 T100 DLF HYF IEF MSUDF  
 ANL 7N MAPLE 86R DLF HYF IEF  
 SHF WYATT P20 W193  
 LJR HAZEL 17U

CE	BW	ADJ WW	ADJ YW	CE	BW	WW	YW	MILK	REA	MARB
U	76	742	1190	6.8	1.4	61.9	96.2	23.6	0.24	0.04

22H is a tank of a bull considering the calving ease he possesses. He is deep sided, big barrelled, and carries a bit more hind quarter than most.

*Recommended for heifers.*



LOT 62 - 22H





LOT 63 -74H

## LOT 63

MCCOY 30E *Olympic* 74H

C03075099 ZTM 74H FEBRUARY 24, 2020 POLLED (scur)

TH 122 71I VICTOR 719T DLF HYF IEF MDF  
**MCCOY 719T MATRIX ET 30E** DLF HYF IEF MSUDF  
 MCCOY P20 ZENA 1B DLF HYF IEF

KCF BENNETT IMPACT B451  
**MCCOY B451 DAHLIA 72E**  
 MCCOY 31Y DAHLIA 113A DLF HYF IEF

DRF JWR PRINCE VICTOR 711  
 KBCR 19D DOMINETTE 122 DLF IEF  
 SHF PROGRESS P20  
 MCCOY 23U ZENA 142Z  
 KCF BENNETT REVOLUTION X51 DLF HYF IEF MDF  
 KCF MISS M326 T56  
 TH 6M 755T PINNACLE 31Y DLF HYF IEF  
 MCCOY 58G DAHLIA 42T

CE	BW	ADJ WW	ADJ YW	CE	BW	WW	YW	MILK	REA	MARB
U	84	648	1078	7.4	0.6	49.6	81.0	23.6	0.33	0.11

74H is a long bodied, well-made son of Matrix 30E that carries a bit more muscle expression and shape through his top and hip than some. He comes from a great cow family and we expect big things from his dam going forward.

*Recommended for heifers.*



LOT 63 & DAM



LOT 64 & DAM

## LOT 64

MCCOY 30E *Monument* 122H

C03073994 ZTM 122H MARCH 3, 2020 POLLED

TH 122 71I VICTOR 719T DLF HYF IEF MDF  
**MCCOY 719T MATRIX ET 30E** DLF HYF IEF MSUDF  
 MCCOY P20 ZENA 1B DLF HYF IEF

JDH 117R EQUITY 70Y ET DLF HYF IEF  
**MCCOY 70Y SUSIE 55D**  
 MCCOY 23U SUSIE 154Z

DRF JWR PRINCE VICTOR 711  
 KBCR 19D DOMINETTE 122 DLF IEF  
 SHF PROGRESS P20  
 MCCOY 23U ZENA 142Z  
 SHF RIB EYE M326 R117 DLF HYF IEF  
 JDH MS P606 BOOMER 20R  
 BBSF 68R ULTIMATE 23U DLF HYF IEF  
 MCCOY 58G SUSIE 33K

CE	BW	ADJ WW	ADJ YW	CE	BW	WW	YW	MILK	REA	MARB
U	86	726	1205	6.2	2.0	54.7	86.7	23.2	0.21	0.06

122H has been one of my favourites all year. In my opinion this bull is the right kind. He is strong headed, high volume, big hiped, and has great testicle development for his age. Udder type of his daughters will be exceptional.



LOT 64 -122H



## LOT 65

MCCOY 30E *Master* 77H

C03074021 ZTM 77H FEBRUARY 24, 2020 POLLED (scur)

TH 122 71I VICTOR 719T DLF HYF IEF MDF  
**MCCOY 719T MATRIX ET 30E** DLF HYF IEF MSUDF  
 MCCOY P20 ZENA 1B DLF HYF IEF

MCCOY 70Y SKYFALL 53A DLF HYF IEF  
**MCCOY 53A KALLA 71E**  
 MCCOY 60U KALLA ET 34Y DLF HYF IEF

DRF JWR PRINCE VICTOR 71I  
 KBCR 19D DOMINETTE 122 DLF IEF  
 SHF PROGRESS P20  
 MCCOY 23U ZENA 142Z  
 JDH 117R EQUITY 70Y ET DLF HYF IEF  
 MCCOY 25M ALISON 64W DLF HYF IEF MSUDF  
 C&T 12R BOBCAT ET 60U  
 MCCOY 49S KALLA 3U DLF HYF IEF

CE	BW	ADJ WW	ADJ YW	CE	BW	WW	YW	MILK	REA	MARB
U	70	616	1075	13.3	-1.8	43.9	67.7	24.9	0.18	0.12

77H is a well-made, good haired, complete Matrix son that was easy to spot in the pasture last summer. Plenty of calving ease and maternal ability bred into this guy. Note 77H is a negative BW bull.

*Recommended for heifers.*



LOT 65 - 77H

## LOT 66

MCCOY 30E *Manoeuvre* 116H

C03073989 ZTM 116H MARCH 3, 2020 POLLED

TH 122 71I VICTOR 719T DLF HYF IEF MDF  
**MCCOY 719T MATRIX ET 30E** DLF HYF IEF MSUDF  
 MCCOY P20 ZENA 1B DLF HYF IEF

PCL HOMEGROWN BALANCE 8Y 33B DLF HYF IEF MSUDF MDC  
**MCCOY 33B REAL LADY ET 7E** DLF HYF IEF MDF  
 PCL REAL LADY 10H 5T DLF HYF IEF

DRF JWR PRINCE VICTOR 71I  
 KBCR 19D DOMINETTE 122 DLF IEF  
 SHF PROGRESS P20  
 MCCOY 23U ZENA 142Z  
 NJW 73S W18 HOMEGROWN 8Y ET DLF HYF IEF MDC  
 HAROLDSON'S CARLA T100 27X DLF HYF IEF  
 DR WORLD CLASS 517 10H  
 PCL REAL LADY 23L 35R DLF HYF IEF

CE	BW	ADJ WW	ADJ YW	CE	BW	WW	YW	MILK	REA	MARB
U	82	702	1151	8.7	0.9	52.5	82.8	27.2	0.19	0.04

116H is a long bodied, high capacity, great haired bull that I have been fond of all summer on pasture tours. This Matrix son does a lot of things right. Enough calving ease to use on heifers and enough performance to use on cows. Watch for this bull as his picture doesn't do him justice.

*Recommended for heifers*



LOT 66 - 116H

## LOT 67

MCCOY 30E *Limit* 131H

C03074062 ZTM 131H MARCH 4, 2020 POLLED

TH 122 71I VICTOR 719T DLF HYF IEF MDF  
**MCCOY 719T MATRIX ET 30E** DLF HYF IEF MSUDF  
 MCCOY P20 ZENA 1B DLF HYF IEF

BBSF 68R ULTIMATE 23U DLF HYF IEF  
**MCCOY 23U ZENA 193Y**  
 MCCOY 52G ZENA 7L

DRF JWR PRINCE VICTOR 71I  
 KBCR 19D DOMINETTE 122 DLF IEF  
 SHF PROGRESS P20  
 MCCOY 23U ZENA 142Z  
 JNHR RED STANDARD 68R DLF HYF IEF  
 BBSF 7C RUBY 10N DLF HYF IEF  
 MCCOY 994D BASIC 52G  
 MCCOY 46B ZENA 35G

CE	BW	ADJ WW	ADJ YW	CE	BW	WW	YW	MILK	REA	MARB
U	87	537	996	7.2	1.4	38.8	62.9	18.5	0.05	0.03

131H is a deep bodied, easy fleshing, great haired Matrix son. Buy 131H to moderate cow size and increase fleshing ability in your cow herd.

*Recommended for heifers.*



LOT 67 - 131H





LOT 68 - 161H

## LOT 68

MCCOY 30E *Margin* 161H

C03074025 ZTM 161H MARCH 9, 2020 POLLED

TH 122 71I VICTOR 719T DLF HYF IEF MDF  
**MCCOY 719T MATRIX ET 30E** DLF HYF IEF MSUDF  
 MCCOY P20 ZENA 1B DLF HYF IEF

BBSF 68R ULTIMATE 23U DLF HYF IEF  
**MCCOY 23U SUSIE 160Z**  
 MCCOY 29R SUSIE 58T

DRF JWR PRINCE VICTOR 71I  
 KBCR 19D DOMINETTE 122 DLF IEF  
 SHF PROGRESS P20  
 MCCOY 23U ZENA 142Z  
 JNHR RED STANDARD 68R DLF HYF IEF  
 BBSF 7C RUBY 10N DLF HYF IEF  
 GLENLEES CL 22H HITCH 29R  
 MCCOY 532M SUSIE 62R

CE	BW	ADJ WW	ADJ YW	CE	BW	WW	YW	MILK	REA	MARB
U	92	643	1122	7.3	1.7	48.0	76.9	20.4	0.21	-0.03

161H is very typical of the Matrix 30E sons; moderate framed, easy fleshing, highly maternal. 161H's dam has outproduced herself in my opinion. She has produced three daughters that are above average contributors in our breeding program.



LOT 69 - 180H

## LOT 69

MCCOY 30E *Element* 180H

C03074026 ZTM 180H MARCH 13, 2020 POLLED

TH 122 71I VICTOR 719T DLF HYF IEF MDF  
**MCCOY 719T MATRIX ET 30E** DLF HYF IEF MSUDF  
 MCCOY P20 ZENA 1B DLF HYF IEF

MCCOY 743 FACEOFF 5Z DLF HYF IEF  
**MCCOY 5Z MELISSA 64B**  
 MCCOY 23U MELISSA 236Z

DRF JWR PRINCE VICTOR 71I  
 KBCR 19D DOMINETTE 122 DLF IEF  
 SHF PROGRESS P20  
 MCCOY 23U ZENA 142Z  
 CRR ABOUT TIME 743 DLF HYF IEF MDF  
 MCCOY 49S KALLA 61W DLF HYF IEF MSUDF  
 BBSF 68R ULTIMATE 23U DLF HYF IEF  
 MCCOY 47N MELISSA 120S

CE	BW	ADJ WW	ADJ YW	CE	BW	WW	YW	MILK	REA	MARB
U	104	689	1209	-0.5	3.1	54.8	86.9	23.1	0.19	0.05

180H is a short marked, heavily pigmented bull that has a bit more performance than many of the Matrix sons. His dam and granddam have been core producers at MCC. His granddam has a Matrix daughter in the replacement pen that I rank near the top.



LOT 70 - 191H

## LOT 70

MCCOY 30E *Emerge* 191H

C03075557 ZTM 191H MARCH 15, 2020 POLLED

TH 122 71I VICTOR 719T DLF HYF IEF MDF  
**MCCOY 719T MATRIX ET 30E** DLF HYF IEF MSUDF  
 MCCOY P20 ZENA 1B DLF HYF IEF

SHF WONDER M326 W18 ET DLF HYF IEF MDC  
**MCCOY W18 CONNIE ET 15Z** DLF HYF IEF MDF  
 MCCOY 58G CONNIE 119L

DRF JWR PRINCE VICTOR 71I  
 KBCR 19D DOMINETTE 122 DLF IEF  
 SHF PROGRESS P20  
 MCCOY 23U ZENA 142Z  
 KCF BENNETT 3008 M326 DLF HYF IEF MDF  
 SHF GOVERNESS 236G L37  
 RU 20X GALAXY 58G  
 MCCOY 5X SABRINA 63B

CE	BW	ADJ WW	ADJ YW	CE	BW	WW	YW	MILK	REA	MARB
U	88	653	1002	8.8	0.6	53.4	90.0	23.8	0.24	0.17

191H comes from the same cow family as Absolute 49S. His dam is an established female in our herd with proven genetic value for calving ease, milk and carcass value. *Recommended for heifers.*



## LOT 71

MCCOY 30E *Enlist* 205H

C03075560 ZTM 205H MARCH 19, 2020 POLLED

TH 122 71I VICTOR 719T DLF HYF IEF MDF  
**MCCOY 719T MATRIX ET 30E** DLF HYF IEF MSUDF  
MCCOY P20 ZENA 1B DLF HYF IEF

JDH 117R EQUITY 70Y ET DLF HYF IEF  
**MCCOY 70Y BRANDY 67D**  
MCCOY 95X BRANDY 55Z DLF HYF IEF

DRF JWR PRINCE VICTOR 71I  
KBCR 19D DOMINETTE 122 DLF IEF  
SHF PROGRESS P20  
MCCOY 23U ZENA 142Z  
SHF RIB EYE M326 R117 DLF HYF IEF  
JDH MS P606 BOOMER 20R  
MCCOY 60U JETSTREAM ET 95X DLF HYF IEF  
HI-DELL 37 BRANDY 29N

CE	BW	ADJ WW	ADJ YW	CE	BW	WW	YW	MILK	REA	MARB
U	86	646	1164	7.8	1.3	49.6	81.4	20.1	0.08	0.06

205H is the deep, soggy, easy fleshing kind of bull that Matrix has done a great job producing for us. If you are looking to add frame to your calf crop this is NOT the bull for you.



LOT 71 - 205H

## LOT 72

MCCOY 30E *Laser* 278H

C03075569 ZTM 278H APRIL 16, 2020 POLLED

TH 122 71I VICTOR 719T DLF HYF IEF MDF  
**MCCOY 719T MATRIX ET 30E** DLF HYF IEF MSUDF  
MCCOY P20 ZENA 1B DLF HYF IEF

TH 6M 755T PINNACLE 31Y DLF HYF IEF  
**MCCOY 31Y KALLA 120B**  
MCCOY 29R MISS MILLIONAIRE 35T

DRF JWR PRINCE VICTOR 71I  
KBCR 19D DOMINETTE 122 DLF IEF  
SHF PROGRESS P20  
MCCOY 23U ZENA 142Z  
TH 223 71I VICTOR 755T DLF HYF IEF  
TH 8J 57G LORETTA 6M DLF HYF IEF  
GLENLEES CL 22H HITCH 29R  
DOUBLE U MISS MILLIONAIRE 80R

CE	BW	ADJ WW	ADJ YW	CE	BW	WW	YW	MILK	REA	MARB
M	104	751	1158	-0.5	4.7	65.1	99.3	24.6	0.19	-0.10

278H is a younger Matrix bull that shows great presence for his age. He is a maternal brother to donor dam 10D. 10D is the dam of Resource 1F and Lot 88.



LOT 72 - 278H

## LOT 73

MCCOY 30E *Purpose* 33H

C03078373 ZTM 33H FEBRUARY 10, 2020 POLLED

TH 122 71I VICTOR 719T DLF HYF IEF MDF  
**MCCOY 719T MATRIX ET 30E** DLF HYF IEF MSUDF  
MCCOY P20 ZENA 1B DLF HYF IEF

MCCOY 743 FACEOFF 5Z DLF HYF IEF  
**MCCOY 5Z VICKIE 226F**  
MCCOY 001A VICKIE 5D

DRF JWR PRINCE VICTOR 71I  
KBCR 19D DOMINETTE 122 DLF IEF  
SHF PROGRESS P20  
MCCOY 23U ZENA 142Z  
CRR ABOUT TIME 743 DLF HYF IEF MDF  
MCCOY 49S KALLA 61W DLF HYF IEF MSUDF  
GERBER ANODYNE 001A DLF HYF IEF  
MCCOY 719T VICKIE 43B

CE	BW	ADJ WW	ADJ YW	CE	BW	WW	YW	MILK	REA	MARB
U	70	605	964	11.6	-1.9	45.6	71.3	22.7	0.18	0.24

33H is a sleep- easy calving ease bull. As much calving ease as anything in the sale. Not easy to find a Hereford bull with a minus 1.9 BW EPD and 11.6 CE EPD.

*Recommended for heifers.*



LOT 73 - 33H





## LOT 74

MCCOY 30E *Kilo* 85H

C03075102

ZTM 85H

FEBRUARY 27, 2020

POLLED

TH 122 71I VICTOR 719T DLF HYF IEF MDF  
**MCCOY 719T MATRIX ET 30E** DLF HYF IEF MSUDF SHF PROGRESS P20  
 MCCOY P20 ZENA 1B DLF HYF IEF  
 KCF BENNETT IMPACT B451  
**MCCOY B451 SUSIE 279E**  
 MCCOY 532M SUSIE ET 75T

DRF JWR PRINCE VICTOR 711  
 KBCR 19D DOMINETTE 122 DLF IEF  
 MCCOY 23U ZENA 142Z  
 KCF BENNETT REVOLUTION X51 DLF HYF IEF MDF  
 KCF MISS M326 T56  
 KJ 520E INVESTOR 532M ET  
 MCCOY 58G SUSIE 33K

CE	BW	ADJ WW	ADJ YW	CE	BW	WW	YW	MILK	REA	MARB
U	94	672	1126	1.4	2.8	53.3	83.4	23.5	0.35	0.04

85H is a long bodied, attractive son of Matrix. He carries a touch more frame than most of the Matrix sire group. Udder quality built into this guy should be difficult to match.

## MCCOY BULL DEVELOPMENT

The McCoy bulls have spent the summer of 2020 on a combination of tame and native pasture at side of their dam. Creep feed was put out on September 3 to aid in the weaning process. Bulls were vaccinated and 205 day weights were recorded on September 19. Bulls were weaned on October 9 and have been developed on a TMR ration consisting of silage, hay, oats, and protein supplement. 365 day weights were recorded on January 7.

As in past year years the bulls will not be semen tested prior to the sale. They will be measured and palpated by a licensed veterinarian before sale day. Semen testing will take place in late March or April as dictated by you the buyer. We retain a large number of spare bulls. Spare bulls are available to you should something happen to your bull between sale day and turn out.

All McCoy bulls will receive initial vaccination for foot rot prior to being delivered.





Excede is the most impressive AI sire we have used in our program. We are excited to have a significant number of sons to offer again in 2021. The Excede calves are born easily and grow rapidly through one year of age. They are rugged, good haired beef bulls with above average fleshing ability, muscling and thickness. Homozygous Polled.



**REF SIRE**

MOHICAN THM *Excede* Z426

C03044655 Z426 APRIL 24, 2012 POLLED

CE	BW	WW	YW	MILK	TM	REA	MARB
7.2	-0.1	60.5	104.6	32.6	62.8	0.024	0.12

**LOT 75**

MCCOY Z426 *Engage* 69H

C03073357 ZTM 69H FEBRUARY 21, 2020 POLLED

TH 133U 719T UPGRADE 69X DLF HYF IEF  
**MOHICAN THM EXCEDE Z426** MDF  
 NJW M326 UNFORGETTABLE 76W ET

C&T 12R BOBCAT ET 60U  
**MCCOY 60U TRISHA 44Y**  
 MCCOY 58G TRISHA 8U DLF HYF IEF MSUDF

TH 122 711 VICTOR 719T DLF HYF IEF MDF  
 TH 14S 103R MEGAN 133U  
 KCF BENNETT 3008 M326 DLF HYF IEF MDF  
 NJW P606 72N DAYDREAM 73S DLF HYF IEF  
 GHC CANUCK 12R DLF HYF IEF MSUDF  
 C&T 4G SCARLET 17K  
 RU 20X GALAXY 58G  
 DXB 2214 TRISHA 49P

CE	BW	ADJ WW	ADJ YW	CE	BW	WW	YW	MILK	REA	MARB
U	82	667	1118	4.7	0.9	52.2	89.9	26.3	0.33	0.04

We've had our eyes on this bull since he was a calf as he definitely has a herd bull presence about him. This stout, soggy made character comes from a great cow family with his short marked, heavily pigmented dam being a fan favourite at our place. Recommended for heifers.



**LOT 75 - 69H**

**LOT 76**

MCCOY Z426 *Motive* 46H

C03073347 ZTM 46H FEBRUARY 14, 2020 POLLED (scur)

TH 133U 719T UPGRADE 69X DLF HYF IEF  
**MOHICAN THM EXCEDE Z426** MDF  
 NJW M326 UNFORGETTABLE 76W ET

JDH 117R EQUITY 70Y ET DLF HYF IEF  
**MCCOY 70Y ZENA 143D**  
 MCCOY 23U ZENA 142Z

TH 122 711 VICTOR 719T DLF HYF IEF MDF  
 TH 14S 103R MEGAN 133U  
 KCF BENNETT 3008 M326 DLF HYF IEF MDF  
 NJW P606 72N DAYDREAM 73S DLF HYF IEF  
 SHF RIB EYE M326 R117 DLF HYF IEF  
 JDH MS P606 BOOMER 20R  
 BBSF 68R ULTIMATE 23U DLF HYF IEF  
 MCCOY 58G ZENA 170S

CE	BW	ADJ WW	ADJ YW	CE	BW	WW	YW	MILK	REA	MARB
U	94	712	1179	-0.4	3.8	60.5	100.4	26.6	0.41	0.03

46H is the kind of bull that we strive to produce. He is extremely easy fleshing, moderate framed, great haired and big hipped. Not too many holes in this bull in my opinion.



**LOT 76 - 46H**





**LOT 77 - 13H**

## LOT 77

MCCOY Z426 *Dimension* 13H

C03072411 ZTM 13H JANUARY 26, 2020 POLLED (scur)

TH 133U 719T UPGRADE 69X<sup>DLF HYF IEF</sup>  
**MOHICAN THM EXCEDE Z426**<sup>MDF</sup>  
 NJW M326 UNFORGETTABLE 76W ET

MCCOY 33T BONA FIDE 6B<sup>DLF HYF IEF</sup>  
**MCCOY 6B ROSE 271F**  
 LEVELDALE ROSE 15M 4R

TH 122 71I VICTOR 719T<sup>DLF HYF IEF MDF</sup>  
 TH 145 103R MEGAN 133U  
 KCF BENNETT 3008 M326<sup>DLF HYF IEF MDF</sup>  
 NJW P606 72N DAYDREAM 73S<sup>DLF HYF IEF</sup>  
 LOEWEN M326 SIR 33T<sup>DLF IEF</sup>  
 MCCOY 58G DAHLIA 42T  
 TRIPLE-J OAKLAND WILDCAT 15M  
 LEVELDALE KASHMIR 615C 6K

CE	BW	ADJ WW	ADJ YW	CE	BW	WW	YW	MILK	REA	MARB
U	82	766	1194	2.5	2.1	57.8	98.7	30.1	0.43	-0.04

13H is a bull that exhibits extra length and performance and yet has a very moderate birth weight. He indexed 113 at weaning.



**LOT 78 - 6H**

## LOT 78

MCCOY Z426 *Carnival* 6H

C03072407 ZTM 6H JANUARY 24, 2020 POLLED

TH 133U 719T UPGRADE 69X<sup>DLF HYF IEF</sup>  
**MOHICAN THM EXCEDE Z426**<sup>MDF</sup>  
 NJW M326 UNFORGETTABLE 76W ET

MCCOY 70Y SKYFALL 53A<sup>DLF HYF IEF</sup>  
**MCCOY 53A BRANDY 255F**  
 MCCOY 95X BRANDY 55Z<sup>DLF HYF IEF</sup>

TH 122 71I VICTOR 719T<sup>DLF HYF IEF MDF</sup>  
 TH 145 103R MEGAN 133U  
 KCF BENNETT 3008 M326<sup>DLF HYF IEF MDF</sup>  
 NJW P606 72N DAYDREAM 73S<sup>DLF HYF IEF</sup>  
 JDH 117R EQUITY 70Y ET<sup>DLF HYF IEF</sup>  
 MCCOY 25M ALISON 64W<sup>DLF HYF IEF MSUDF</sup>  
 MCCOY 60U JETSTREAM ET 95X<sup>DLF HYF IEF</sup>  
 HI-DELL 37 BRANDY 29N

CE	BW	ADJ WW	ADJ YW	CE	BW	WW	YW	MILK	REA	MARB
U	68	610	1075	10.0	0.2	49.7	87.3	26.0	0.22	0.23

6H is an easy fleshing, low birth weight son of Excede. His dam, Brandy 255F, comes from a long line of calving ease females that transmit extra calving ease. *Recommended for heifers.*



**LOT 79 - 54H**

## LOT 79

MCCOY Z426 *Major* 54H

C03073350 ZTM 54H FEBRUARY 16, 2020 POLLED

TH 133U 719T UPGRADE 69X<sup>DLF HYF IEF</sup>  
**MOHICAN THM EXCEDE Z426**<sup>MDF</sup>  
 NJW M326 UNFORGETTABLE 76W ET

MCCOY 31Y KINGDOM 30A<sup>DLF HYF IEF MSUDF</sup>  
**MCCOY 30A CONNIE 141D**  
 MCCOY 70Y CONNIE 87A

TH 122 71I VICTOR 719T<sup>DLF HYF IEF MDF</sup>  
 TH 145 103R MEGAN 133U  
 KCF BENNETT 3008 M326<sup>DLF HYF IEF MDF</sup>  
 NJW P606 72N DAYDREAM 73S<sup>DLF HYF IEF</sup>  
 TH 6M 755T PINNACLE 31Y<sup>DLF HYF IEF</sup>  
 MCCOY 58G TRISHA 8U<sup>DLF HYF IEF MSUDF</sup>  
 JDH 117R EQUITY 70Y ET<sup>DLF HYF IEF</sup>  
 MCCOY 30N CONNIE 3W

CE	BW	ADJ WW	ADJ YW	CE	BW	WW	YW	MILK	REA	MARB
U	100	703	1192	-1.4	4.3	58.2	97.6	24.6	0.35	-0.05

54H is a powerful, high volume son of Excede Z426. Excede is one of the top AI bulls to be used at MCC and 54H is another example of this.



## LOT 80

MCCOY Z426 *Junction* 94H

C03074022 ZTM 94H FEBRUARY 29, 2020 POLLED

TH 133U 719T UPGRADE 69X DLF HYF IEF  
**MOHICAN THM EXCEDE Z426** MDF  
 NJW M326 UNFORGETTABLE 76W ET

JDH 117R EQUITY 70Y ET DLF HYF IEF  
**MCCOY 70Y ALISON 111D**  
 MCCOY 194L ALISON 16N

TH 122 71I VICTOR 719T DLF HYF IEF MDF  
 TH 145 103R MEGAN 133U  
 KCF BENNETT 3008 M326 DLF HYF IEF MDF  
 NJW P606 72N DAYDREAM 73S DLF HYF IEF  
 SHF RIB EYE M326 R117 DLF HYF IEF  
 JDH MS P606 BOOMER 20R  
 DOUBLE-U LEGACY 194L  
 MCCOY 994D SABRINA 9G

CE	BW	ADJ WW	ADJ YW	CE	BW	WW	YW	MILK	REA	MARB
U	94	693	1219	3.6	2.1	52.5	89.0	28.0	0.27	0.07

94H is a super easy fleshing, big middled Excede son. His dam is very moderate and has been a top producer for us thus far. The cow family behind this guy is a special one with great longevity.



LOT 80 - 94H

## LOT 81

MCCOY Z426 *Judge* 61H

C03073353 ZTM 61H FEBRUARY 18, 2020 TWIN POLLED (scur)

TH 133U 719T UPGRADE 69X DLF HYF IEF  
**MOHICAN THM EXCEDE Z426** MDF  
 NJW M326 UNFORGETTABLE 76W ET

KIRBY-LONE PINE SANTANA ET 91S DLF HYF IEF  
**XLP CLF AMBER 91S 22X**  
 XLP CLF AMBER 22T

TH 122 71I VICTOR 719T DLF HYF IEF MDF  
 TH 145 103R MEGAN 133U  
 KCF BENNETT 3008 M326 DLF HYF IEF MDF  
 NJW P606 72N DAYDREAM 73S DLF HYF IEF  
 RU 20X GALAXY 58G  
 WTK 21F SYBIL 109J  
 DCC THOMASTON 2103 ET DLF HYF IEF  
 JAC AMBER 22R DLF HYF IEF

CE	BW	ADJ WW	ADJ YW	CE	BW	WW	YW	MILK	REA	MARB
U	74	608	1053	0.0	2.1	52.0	87.0	30.2	0.42	0.02

The 22X cow has been a mainstay in our program. Her two Excede sons are both complete bulls that should calve and produce daughters that have longevity to them.



LOT 81 - 61H

## LOT 82

MCCOY Z426 *Jury* 62H

C03073354 ZTM 62H FEBRUARY 18, 2020 TWIN POLLED

TH 133U 719T UPGRADE 69X DLF HYF IEF  
**MOHICAN THM EXCEDE Z426** MDF  
 NJW M326 UNFORGETTABLE 76W ET

KIRBY-LONE PINE SANTANA ET 91S DLF HYF IEF  
**XLP CLF AMBER 91S 22X**  
 XLP CLF AMBER 22T

TH 122 71I VICTOR 719T DLF HYF IEF MDF  
 TH 145 103R MEGAN 133U  
 KCF BENNETT 3008 M326 DLF HYF IEF MDF  
 NJW P606 72N DAYDREAM 73S DLF HYF IEF  
 RU 20X GALAXY 58G  
 WTK 21F SYBIL 109J  
 DCC THOMASTON 2103 ET DLF HYF IEF  
 JAC AMBER 22R DLF HYF IEF

CE	BW	ADJ WW	ADJ YW	CE	BW	WW	YW	MILK	REA	MARB
U	64	626	1081	3.5	0.6	50.5	83.4	30.2	0.44	0.05

62H is the twin brother to Lot 81. He is very typical of the Excede sire group and comes from a dam that has done a consistent job for us over many years.

*Recommended for heifers.*



LOT 82 - 62H





**LOT 83 - 41H**

## LOT 83

MCCOY 9F *Lariat* 41H

C03073343 ZTM 41H FEBRUARY 14, 2020 POLLED

MOHICAN THM EXCEDE Z426 MDF  
**MCCOY Z426 LEGACY 9F** DLF HYF IEF MSUDF  
 MCCOY Z311 CONNIE 56D DLF HYF IEF MSUDF

WCC 17Y MR LAMBEAU 1337C DLF HYF IEF MSUDF  
**DTHF FREEDOM 47F**  
 DTHF DALIHA 27D

TH 133U 719T UPGRADE 69X DLF HYF IEF  
 NJW M326 UNFORGETTABLE 76W ET  
 KCF BENNETT ENCORE Z311 ET DLF HYF IEF  
 MCCOY 5Z CONNIE 92B  
 TH 22R 16S LAMBEAU 17Y  
 WCC 362T TAYLOR 1337A  
 ANL DM 719T VICTOR 76S ET 47Z DLF HYF IEF  
 DTHF UTAH 236Y

CE	BW	ADJ WW	ADJ YW	CE	BW	WW	YW	MILK	REA	MARB
U	82	648	1121	7.8	0.8	53.7	90.9	29.1	0.32	0.16

Lariat 41H is sired by McCoy Z426 Legacy 9F who was the high selling bull in our 2019 sale selling to Doug Troop. He types very similar to his sire and offers calving ease, extra thickness and a balanced set of EPD's.

*Recommended for heifers.*



**MCCOY Z426 LEGACY 9F**

Sire of Lot 83  
 Herdsire for Doug Troop Hereford Farm.  
 High Seller in our 2019 sale



**MCCOY Z426 MONARCH 20F**

Sire of Lot 84  
 Herdsire for O'Shea Farms, Oulton Farms and Vintage Farms  
 Purchased in our 2019 sale



**LOT 84 - 2212H**

## LOT 84

OSF MCCOY *Hernandez* 20F 2212H DLF HYF IEF MSUDF

C03075672 OSF 2212H FEBRUARY 12, 2020 POLLED

MOHICAN THM EXCEDE Z426 MDF  
**MCCOY Z426 MONARCH 20F** DLF HYF IEF MSUDF  
 MCCOY A191 LADY LUCK 72D DLF HYF IEF MSUDF

JDH 4X ULTIMATE 236Z 94B DLF HYF IEF MDF  
**WLL FLAWLESS 14F**  
 OSF COLBI 49S 314Y

TH 133U 719T UPGRADE 69X DLF HYF IEF  
 NJW M326 UNFORGETTABLE 76W ET  
 SHF ALL STAR 42X A191 DLF HYF IEF  
 PCL MW LADY LUCK 25Z 38B  
 VCR 993W ULTIMATE 236Z  
 JDH AH VIOLETS RECRUIT 4X ET  
 MCCOY 55M ABSOLUTE 49S DLF HYF IEF  
 OSF COLBI 139S ET 205U

CE	BW	ADJ WW	ADJ YW	CE	BW	WW	YW	MILK	REA	MARB
U	90	839	1256	0.0	4.1	60.9	95.6	27.6	0.32	0.01

2212H is sired by a past high selling bull, Monarch, who has left an impressive set of calves in his first calf crop despite most being heifers. A very complete and balanced individual, this guy does a lot of things well so make sure you give him consideration. He will be a good fit in multiple operations. Homozygous Polled.



We chose to use Rewind in our AI program last year as an outcross sire. We became interested in 147E after evaluating the "Cal" daughters at Hills Galore on the SW Sask Hereford Tour. 147E's tank of a dam is a Cal daughter. The Rewind calves have exhibited extra growth up to this point and are generally short marked, and well pigmented cattle. We are impressed with the bulls but maybe more excited to calve some daughters in 2022. We are retaining a son of Rewind for herd bull duty as well. Homozygous Polled.



## REF SIRE

HILLS-GALORE 44Z *Rewind* 147E DLF HYF IEF MSUDF

C03042926 POJ 147E MAY 10, 2017 POLLED

CE	BW	WW	YW	MILK	TM	REA	MARB
6.1	1.2	57.6	102.3	28.4	57.2	0.56	0.25

## LOT 85

MCCOY 147E *Eclipse* 50H

C03073348 ZTM 50H FEBRUARY 15, 2020 POLLED (scur)

RST X51 REVOLUTION 4102  
HILLS-GALORE 44Z *REWIND 147E* DLF HYF IEF MSUDF  
HILLS-GALORE 52R CALLI 44Z DLF HYF IEF MSUDF

TH 6M 755T PINNACLE 31Y DLF HYF IEF  
MCCOY 31Y *VICKIE 186C*  
MCCOY 23U VICKIE 147Z

KCF BENNETT REVOLUTION X51 DLF HYF IEF MDF  
RST MS 1030 TOP SECRET 5128  
JB 531 BRAXTON CAL 605U DLF HYF IEF  
HILLS-GALORE 32G MAY 52R  
TH 223 711 VICTOR 755T DLF HYF IEF  
TH 8J 57G LORETTA 6M DLF HYF IEF  
BBSF 68R ULTIMATE 23U DLF HYF IEF  
MCCOY R117 VICKIE 22W

CE	BW	ADJ WW	ADJ YW	CE	BW	WW	YW	MILK	REA	MARB
U	88	609	1097	3.2	1.7	48.6	83.0	25.6	49.9	0.06

50H is a short marked, heavily pigmented son of Rewind. His dam would rank at the very top of our herd for udder structure both in terms of teat size and suspension. Recommended for heifers.



LOT 85 - 50H

## LOT 86

MCCOY 147E *Deadline* 7H

C03072408 ZTM 7H JANUARY 24, 2020 POLLED

RST X51 REVOLUTION 4102  
HILLS-GALORE 44Z *REWIND 147E* DLF HYF IEF MSUDF  
HILLS-GALORE 52R CALLI 44Z DLF HYF IEF MSUDF

MCCOY 001A HINGE 2D DLF HYF IEF MSUDF  
MCCOY 2D *DAHLIA 33F*  
MCCOY 70Y DAHLIA 120D

KCF BENNETT REVOLUTION X51 DLF HYF IEF MDF  
RST MS 1030 TOP SECRET 5128  
JB 531 BRAXTON CAL 605U DLF HYF IEF  
HILLS-GALORE 32G MAY 52R  
GERBER ANODYNE 001A DLF HYF IEF  
MCCOY 628Z VICKIE 68B  
JDH 117R EQUITY 70Y ET DLF HYF IEF  
MCCOY 25M DAHLIA 79W

CE	BW	ADJ WW	ADJ YW	CE	BW	WW	YW	MILK	REA	MARB
M	92	789	1227	-0.2	4.0	65.3	102.2	27.4	0.60	0.07

7H was one of the first calves born out of Rewind 147E. He is goggle-eyed, good haired and deep sided. 7H ranked 3/56 for weaning weight in his contemporary group.



LOT 86 - 7H





LOT 87 - 45H

## LOT 87

MCCOY 147E *Mission* 45H

C03073346 ZTM 45H FEBRUARY 14, 2020 POLLED

RST X51 REVOLUTION 4102  
**HILLS-GALORE 44Z REWIND 147E** DLF HYF IEF MSUDF  
 HILLS-GALORE 52R CALLI 44Z DLF HYF IEF MSUDF  
 TH 122 71I VICTOR 719T DLF HYF IEF MDF  
**MCCOY 719T SUSIE ET 418B** DLF HYF IEF  
 MCCOY 58G SUSIE 33K

KCF BENNETT REVOLUTION X51 DLF HYF IEF MDF  
 RST MS 1030 TOP SECRET 5128  
 JB 531 BRAXTON CAL 605U DLF HYF IEF  
 HILLS-GALORE 32G MAY 52R  
 DRF JWR PRINCE VICTOR 71I  
 KBCR 19D DOMINETTE 122 DLF IEF  
 RU 20X GALAXY 58G  
 MCCOY 994D TESSA 66G

CE	BW	ADJ WW	ADJ YW	CE	BW	WW	YW	MILK	REA	MARB
U	96	833	1359	0.7	2.6	65.2	107.2	31.5	0.69	0.01

45H was our number one indexing bull for both weaning and yearling weight (125 at weaning and 119 at yearling). His dam, 418B, has consistently produced strong bulls with extra performance.



MCCOY 58G SUSIE 33K

Grand dam of Lot 87



MCCOY 147E COMPASS ET 31H

Flush brother to Lot 88  
 31H is being retained for herd bull duty at MCC



LOT 88 - 28H

## LOT 88

MCCOY 147E *Journey* ET 28H DLF HYF IEF MSUDF

C03077957 ZTM 28H FEBRUARY 9, 2020 POLLED

RST X51 REVOLUTION 4102  
**HILLS-GALORE 44Z REWIND 147E** DLF HYF IEF MSUDF  
 HILLS-GALORE 52R CALLI 44Z DLF HYF IEF MSUDF  
 MCCOY 55M ABSOLUTE 49S DLF HYF IEF  
**MCCOY 49S KALLA 10D** DLF HYF IEF MSUDF  
 MCCOY 31Y KALLA 120B

KCF BENNETT REVOLUTION X51 DLF HYF IEF MDF  
 RST MS 1030 TOP SECRET 5128  
 JB 531 BRAXTON CAL 605U DLF HYF IEF  
 HILLS-GALORE 32G MAY 52R  
 MCCOY 3J MATADOR 55M  
 MCCOY 58G CONNIE 119L  
 TH 6M 755T PINNACLE 31Y DLF HYF IEF  
 MCCOY 29R MISS MILLIONAIRE 35T

CE	BW	ADJ WW	ADJ YW	CE	BW	WW	YW	MILK	REA	MARB
U	86	716	1260	2.1	2.1	60.2	99.6	30.1	0.17	0.24

28H is the result of a successful mating of our donor cow, Kalla 10D and Rewind 147E. We are retaining a flush brother to use in our herd. Kalla 10D has produced bulls that were in the top of our sale offering the past two years. Watch for more to come from his dam in the near future. This is the type of herd bull we strive to raise. Homozygous Polled.



Resource 1F was one of the high selling bulls in 2019 selling to Allan Polvi at Rocanville. Allan gave us an opportunity to lease 1F in 2019 so we were able to get a sampling of calves from him this spring. We ended up with primarily heifer calves but the bulls that were born are quite interesting. Resource's dam, Kalla 10D, is also the dam of Lot 88.



**REF SIRE**

MCCOY 001A *Resource* 1F DLF HYF IEF MSUDF

C03049088 ZTM 1F JANUARY 20, 2018 POLLED

CE	BW	WW	YW	MILK	TM	REA	MARB
3.6	1.4	74.6	116.2	26.4	63.7	0.73	0.14

**LOT 89**

MCCOY 1F *Lightning* 67H

C03068895 ZTM 67H FEBRUARY 20, 2020 POLLED (scur)

GERBER ANODYNE 001A DLF HYF IEF

**MCCOY 001A RESOURCE 1F** DLF HYF IEF MSUDF

MCCOY 49S KALLA 10D DLF HYF IEF MSUDF

TH 122 71I VICTOR 719T DLF HYF IEF MDF

**C&T BREEZE WAY 719T RIVER 3B**

C&T 102S RIVIERA 45Z

KCF BENNETT 9126J R294 DLF HYF IEF

GERBER 627S HOLLY 096Y

MCCOY 55M ABSOLUTE 49S DLF HYF IEF

MCCOY 31Y KALLA 120B

DRF JWR PRINCE VICTOR 711

KBCR 19D DOMINETTE 122 DLF IEF

MHPH 13P STETSON 102S DLF HYF IEF MSUDF

RSK 33L RIVIERA 10R



**LOT 89 - 67H**

CE	BW	ADJ WW	ADJ YW	CE	BW	WW	YW	MILK	REA	MARB
U	102	730	1274	-0.6	4.0	69.7	108.4	26.5	0.48	-0.01

67H is a powerful performance bull that has caught the eye of visitors this year. His sire was one of our top sellers in our 2019 sale. Lots of performance is this pedigree as his dam has also produced a high performance bull that we retained to use on our commercial cows.

**LOT 90**

MCCOY 1F *Protector* 72H

C03068896 ZTM 72H FEBRUARY 23, 2020 POLLED (scur)

GERBER ANODYNE 001A DLF HYF IEF

**MCCOY 001A RESOURCE 1F** DLF HYF IEF MSUDF

MCCOY 49S KALLA 10D DLF HYF IEF MSUDF

JDH 117R EQUITY 70Y ET DLF HYF IEF

**MCCOY 70Y CONNIE 65C**

MCCOY 58G CONNIE 70Z DLF HYF IEF MSUDF

KCF BENNETT 9126J R294 DLF HYF IEF

GERBER 627S HOLLY 096Y

MCCOY 55M ABSOLUTE 49S DLF HYF IEF

MCCOY 31Y KALLA 120B

SHF RIB EYE M326 R117 DLF HYF IEF

JDH MS P606 BOOMER 20R

RU 20X GALAXY 58G

MCCOY 73R CONNIE 92W



**LOT 90 - 72H**

CE	BW	ADJ WW	ADJ YW	CE	BW	WW	YW	MILK	REA	MARB
U	86	731	1245	8.0	1.7	62.2	99.1	26.6	0.54	0.15

This easy doing herd bull prospect is the kind that we strive to produce. 72H is big hipped, loose hided and possesses a hair coat that is second to none. He checks all the boxes in our opinion.

*Recommended for heifers.*





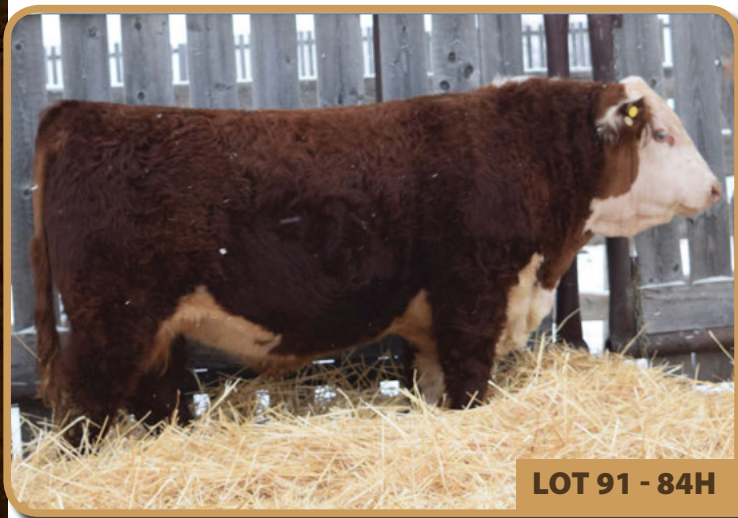
## REF SIRE

CMF 20X *Eby* 351E

C03061234 CMF 351E SEPTEMBER 29, 2017 POLLED

CE	BW	WW	YW	MILK	TM	REA	MARB
-4.6	6.8	67.0	116.4	25.0	58.5	0.85	0.38

We were able to purchase 351E from Candy Meadow Farm in Tennessee in the spring of 2019. 351E brings exceptional carcass value as well as strong performance and maternal attributes to the table. We unfortunately lost him after one breeding season but expect his daughters will carry on his influence in our herd and feel his sons are a strong bunch of beef bulls. Homozygous Polled.



LOT 91 - 84H

## LOT 91

MCCOY 351E *Windfall* 84H

C03070973 ZTM 84H FEBRUARY 27, 2020 POLLED (scur)

NJW 33TB 100W TRUST 167Y <sup>MDF</sup>  
**CMF 20X EBY 351E**  
 CMF 823T VICTORIA 20X

GERBER ANODYNE 001A <sup>DLF HYF IEF</sup>  
**MCCOY 1A SUSIE 11E**  
 MCCOY 31Y SUSIE 179C

NJW 735 M326 TRUST 100W ET <sup>DLF HYF IEF</sup>  
 BROOKVIEW 242 TEQUILA ROSE 33T  
 SHF REM MIAMI 434V M03  
 SF VICTORIA 711 823  
 KCF BENNETT 9126J R294 <sup>DLF HYF IEF</sup>  
 GERBER 627S HOLLY 096Y  
 TH 6M 755T PINNACLE 31Y <sup>DLF HYF IEF</sup>  
 MCCOY 23U SUSIE 160Z

CE	BW	ADJ WW	ADJ YW	CE	BW	WW	YW	MILK	REA	MARB
U	86	748	1189	3.5	3.3	64.1	105.9	27.1	0.72	0.27

84H is a high volume, deep bodied, good haired son of 351E. His dam has been a favourite of mine since birth and her production on her first few calves is likely to keep her in the good books.



LOT 92 - 229H

## LOT 92

MCCOY 351E *Enforce* 229H

C03075562 ZTM 229H MARCH 28, 2020 POLLED

NJW 33TB 100W TRUST 167Y <sup>MDF</sup>  
**CMF 20X EBY 351E**  
 CMF 823T VICTORIA 20X

TH 122 711 VICTOR 719T <sup>DLF HYF IEF MDF</sup>  
**MCCOY 719T ROSE 12D**  
 MCCOY 5Z ROSE 141B

NJW 735 M326 TRUST 100W ET <sup>DLF HYF IEF</sup>  
 BROOKVIEW 242 TEQUILA ROSE 33T  
 SHF REM MIAMI 434V M03  
 SF VICTORIA 711 823  
 DRF JWR PRINCE VICTOR 711  
 KBCR 19D DOMINETTE 122 <sup>DLF IEF</sup>  
 MCCOY 743 FACEOFF 5Z <sup>DLF HYF IEF</sup>  
 MCCOY 23U ROSE 93Y

CE	BW	ADJ WW	ADJ YW	CE	BW	WW	YW	MILK	REA	MARB
U	88	633	1141	2.4	2.9	54.5	89.1	23.5	0.58	0.17

229H is a younger bull that has been pretty exciting to watch develop over the last few months. He carries tremendous presence and balance across the board. I hope I don't regret not retaining this guy for herd bull duty. He is one of our top gaining bulls post weaning.



## LOT 93

MCCOY 351E *Marksman* 52H

C03073349

ZTM 52H

FEBRUARY 15, 2020

POLLED

NJW 33TB 100W TRUST 167Y <sup>MDF</sup>  
**CMF 20X EBY 351E**  
 CMF 823T VICTORIA 20X

JDH 117R EQUITY 70Y ET <sup>DLF HYF IEF</sup>  
**MCCOY 70Y ALISON 28B**  
 MCCOY 30N ALISON 4R

NJW 73S M326 TRUST 100W ET <sup>DLF HYF IEF</sup>  
 BROOKVIEW 242 TEQUILA ROSE 33T  
 SHF REM MIAMI 434V M03  
 SF VICTORIA 711 823  
 SHF RIB EYE M326 R117 <sup>DLF HYF IEF</sup>  
 JDH MS P606 BOOMER 20R  
 GHC NEVER LOOK BACK ET 30N  
 MCCOY 58G ALISON 121N <sup>DLF HYF IEF</sup>

CE	BW	ADJ WW	ADJ YW	CE	BW	WW	YW	MILK	REA	MARB
U	94	657	1170	0.1	4.5	56.2	93.8	20.0	0.56	0.21

52H is a long bodied, high performing son of 351E. His dam, 28B, has been a model brood cow for MCC being moderate framed, sound uddered, and great haired.



LOT 93 - 52H



MCCOY 70Y ALISON 28B

Dam of Lot 93



MCCOY 1A SUSIE 11E

Dam of Lot 91

## LOT 94

MCCOY 351E *Leadoff* 121H

C03073992

ZTM 121H

MARCH 3, 2020

POLLED

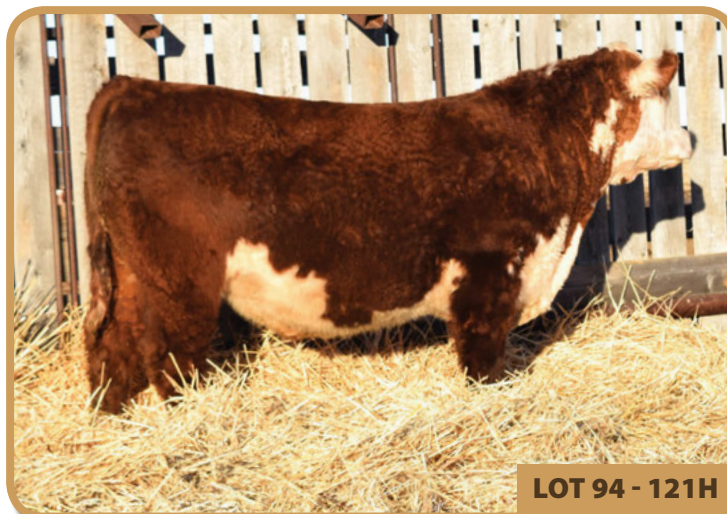
NJW 33TB 100W TRUST 167Y <sup>MDF</sup>  
**CMF 20X EBY 351E**  
 CMF 823T VICTORIA 20X

TH 122 711 VICTOR 719T <sup>DLF HYF IEF MDF</sup>  
**MCCOY 719T SUSIE ET 417B** <sup>DLF HYF IEF</sup>  
 MCCOY 58G SUSIE 33K

NJW 73S M326 TRUST 100W ET <sup>DLF HYF IEF</sup>  
 BROOKVIEW 242 TEQUILA ROSE 33T  
 SHF REM MIAMI 434V M03  
 SF VICTORIA 711 823  
 DRF JWR PRINCE VICTOR 711  
 KBCR 19D DOMINETTE 122 <sup>DLF IEF</sup>  
 RU 20X GALAXY 58G  
 MCCOY 994D TESSA 66G

CE	BW	ADJ WW	ADJ YW	CE	BW	WW	YW	MILK	REA	MARB
U	100	715	1138	-3.0	5.1	63.2	107.0	27.7	0.66	0.13

121H is a son of the 351E bull that we purchased from Candy Meadow Farm in 2019. We expect him to transmit exceptional carcass value and strong maternal values to his progeny.



LOT 94 - 121H





LOT 95 - 95H

## LOT 95

MCCOY 351E *Energy* 95H

C03074023 ZTM 95H FEBRUARY 29, 2020 POLLED TWIN

NJW 33TB 100W TRUST 167Y<sup>MDF</sup>  
**CMF 20X EBY 351E**  
 CMF 823T VICTORIA 20X

LOEWEN M326 SIR 33T<sup>DLF IEF</sup>  
**MCCOY 33T ZENA 48Z**  
 MCCOY 264P ZENA 49W

NJW 73S M326 TRUST 100W ET<sup>DLF HYF IEF</sup>  
 BROOKVIEW 242 TEQUILA ROSE 33T  
 SHF REM MIAMI 434V M03  
 SF VICTORIA 711 823  
 KCF BENNETT 3008 M326<sup>DLF HYF IEF MDF</sup>  
 HVH OKSANA 4L 33N<sup>DLF HYF IEF</sup>  
 MJT CENTURY 264P  
 MCCOY 52G ZENA 7L

CE	BW	ADJ WW	ADJ YW	CE	BW	WW	YW	MILK	REA	MARB
U	84	657	1163	-3.7	7.2	68.7	113.7	21.9	0.70	0.17

95H is a long spined, deep bodied, easy fleshing son of 351E. His dam has been a great producing cow that is pretty ideal in her type and kind (in my opinion).



LOT 96 - 64H

## LOT 96

MCCOY 351E *Master* 64H

C03073356 ZTM 64H FEBRUARY 18, 2020 POLLED

NJW 33TB 100W TRUST 167Y<sup>MDF</sup>  
**CMF 20X EBY 351E**  
 CMF 823T VICTORIA 20X

MCCOY 70Y SKYFALL 53A<sup>DLF HYF IEF</sup>  
**MCCOY 53A SUE 91E**  
 MCCOY 31Y SUE 109B

NJW 73S M326 TRUST 100W ET<sup>DLF HYF IEF</sup>  
 BROOKVIEW 242 TEQUILA ROSE 33T  
 SHF REM MIAMI 434V M03  
 SF VICTORIA 711 823  
 JDH 117R EQUITY 70Y ET<sup>DLF HYF IEF</sup>  
 MCCOY 25M ALISON 64W<sup>DLF HYF IEF MSUDF</sup>  
 TH 6M 755T PINNACLE 31Y<sup>DLF HYF IEF</sup>  
 MCCOY 58G SUE 138R

CE	BW	ADJ WW	ADJ YW	CE	BW	WW	YW	MILK	REA	MARB
U	104	693	1133	-5.9	6.8	61.1	103.1	27.6	58.2	0.17

64H is a long bodied, short marked, attractive son of 351E. His dam has the kind of udder that we are striving for: small teated, adequate milk flow, and ultra tight suspension. His granddam had the same udder structure but had the misfortune of losing her in a dugout several winters ago.





Unfortunately we lost Skyfall last winter from a bull fight but fortunately we were able to use him via natural service for six seasons prior to that. Skyfall gave us everything we can expect of a bull during his tenure. His daughters will be the future of our herd going forward and we are feeling pretty good about that. He is a trait leader for teat size, udder suspension, and marbling. Homozygous Polled.



**REF SIRE**

MCCOY 70Y *Skyfall* 53A DLF HYF IEF

C02986013 ZTM 53A FEBRUARY 14, 2013 POLLED

CE	BW	WW	YW	MILK	TM	REA	MARB
2.6	3.2	49.2	75.6	33.1	57.7	0.42	0.19

## LOT 97

MCCOY 30E *Discover* 108H

C03073981 ZTM 108H MARCH 2, 2020 POLLED

JDH 117R EQUITY 70Y ET DLF HYF IEF  
**MCCOY 70Y SKYFALL 53A** DLF HYF IEF  
 MCCOY 25M ALISON 64W DLF HYF IEF MSUDF

MCCOY 31Y KINGDOM 30A DLF HYF IEF MSUDF  
**MCCOY 30A TRISHA 200E**  
 MCCOY 49S TRISHA 23B

SHF RIB EYE M326 R117 DLF HYF IEF  
 JDH MS P606 BOOMER 20R  
 GHR MILLIONAIRE 10E 25M  
 MCCOY 77P ALISON 61T  
 TH 6M 755T PINNACLE 31Y DLF HYF IEF  
 MCCOY 58G TRISHA 8U DLF HYF IEF MSUDF  
 MCCOY 55M ABSOLUTE 49S DLF HYF IEF  
 MCCOY 719T TRISHA 16Z DLF HYF IEF MSUDF

CE	BW	ADJ WW	ADJ YW	CE	BW	WW	YW	MILK	REA	MARB
U	96	618	1143	0.4	3.8	47.7	76.4	26.6	0.26	0.06

108H is a well-balanced Skyfall son that comes from a very strong cow family at MCC. 108H ranks in the top 20% of the group for post weaning ADG.



LOT 97 - 108H

## LOT 98

MCCOY 53A *Legend* 82H

C03075100 ZTM 82H FEBRUARY 27, 2020 POLLED

JDH 117R EQUITY 70Y ET DLF HYF IEF  
**MCCOY 70Y SKYFALL 53A** DLF HYF IEF  
 MCCOY 25M ALISON 64W DLF HYF IEF MSUDF

MCCOY 55M ABSOLUTE 49S DLF HYF IEF  
**MCCOY 49S TRISHA 23B**  
 MCCOY 719T TRISHA 16Z DLF HYF IEF MSUDF

SHF RIB EYE M326 R117 DLF HYF IEF  
 JDH MS P606 BOOMER 20R  
 GHR MILLIONAIRE 10E 25M  
 MCCOY 77P ALISON 61T  
 MCCOY 3J MATADOR 55M  
 MCCOY 58G CONNIE 119L  
 TH 122 711 VICTOR 719T DLF HYF IEF MDF  
 MCCOY R117 TRISHA 14X

CE	BW	ADJ WW	ADJ YW	CE	BW	WW	YW	MILK	REA	MARB
U	82	611	1026	8.4	0.3	45.1	70.4	27.6	0.31	0.13

82H is a long bodied, smooth made, big topped Skyfall son. His dam has been a core producer for us and his granddam has been a big part of our ET program. Use him with confidence.

Recommended for heifers.



LOT 98 - 82H





LOT 99 -141H

## LOT 99

MCCOY 53A *Omega* 141H

C03075104 ZTM 141H MARCH 6, 2020 POLLED

JDH 117R EQUITY 70Y ET DLF HYF IEF  
**MCCOY 70Y SKYFALL 53A** DLF HYF IEF  
 MCCOY 25M ALISON 64W DLF HYF IEF MSUDF

BBSF 68R ULTIMATE 23U DLF HYF IEF  
**MCCOY 23U ZENA 198Z**  
 DOUBLE-U MISS INVESTOR 11S

SHF RIB EYE M326 R117 DLF HYF IEF  
 JDH MS P606 BOOMER 20R  
 GHR MILLIONAIRE 10E 25M  
 MCCOY 77P ALISON 61T  
 MCCOY 3J MATADOR 55M  
 BBSF 7C RUBY 10N DLF HYF IEF  
 KJ 520E INVESTOR 532M ET  
 MCCOY 194L ZENA 89N

CE	BW	ADJ WW	ADJ YW	CE	BW	WW	YW	MILK	REA	MARB
U	88	607	1104	4.2	3.0	45.0	67.2	22.0	0.26	0.07

141H's dam is in many ways a pretty ideal beef cow; sound uddered, easy fleshing, short marked, and adequate milk flow. A maternal brother sold to Curt Johnson in our 2019 sale.



LOT 100 -109H

## LOT 100

MCCOY 53A *Demand* 109H

C03073982 ZTM 109H MARCH 2, 2020 POLLED

JDH 117R EQUITY 70Y ET DLF HYF IEF  
**MCCOY 70Y SKYFALL 53A** DLF HYF IEF  
 MCCOY 25M ALISON 64W DLF HYF IEF MSUDF

TH 122 71I VICTOR 719T DLF HYF IEF MDF  
**MCCOY 719T VICKIE 43B**  
 MCCOY 23U VICKIE 112Z

SHF RIB EYE M326 R117 DLF HYF IEF  
 JDH MS P606 BOOMER 20R  
 GHR MILLIONAIRE 10E 25M  
 MCCOY 77P ALISON 61T  
 DRF JWR PRINCE VICTOR 71I  
 KBCR 19D DOMINETTE 122 DLF IEF  
 BBSF 68R ULTIMATE 23U DLF HYF IEF  
 MCCOY R117 VICKIE 31W

CE	BW	ADJ WW	ADJ YW	CE	BW	WW	YW	MILK	REA	MARB
U	96	647	1125	3.4	2.8	50.0	73.5	28.8	0.32	0.15

109H is a great haired Skyfall son that has been easy to find all year long. His strong producing dam is a maternal sister to 127C, who has been a foundation donor dam for Arthur Polled Herefords. Their high selling bull and female in their December sale were both out of 127C.



LOT 101 - 277H

## LOT 101

MCCOY 53A *District* 277H

C03075567 ZTM 277H APRIL 16, 2020 POLLED

JDH 117R EQUITY 70Y ET DLF HYF IEF  
**MCCOY 70Y SKYFALL 53A** DLF HYF IEF  
 MCCOY 25M ALISON 64W DLF HYF IEF MSUDF

RU 20X GALAXY 58G  
**MCCOY 58G CONNIE 70Z** DLF HYF IEF MSUDF  
 MCCOY 73R CONNIE 92W

SHF RIB EYE M326 R117 DLF HYF IEF  
 JDH MS P606 BOOMER 20R  
 GHR MILLIONAIRE 10E 25M  
 MCCOY 77P ALISON 61T  
 REMITALL KEYNOTE 20X  
 RU 10A ELM 57E  
 LAMPOR'S 87N PARAGON 73R  
 MCCOY 740C CONNIE 78J

CE	BW	ADJ WW	ADJ YW	CE	BW	WW	YW	MILK	REA	MARB
U	94	661	1066	3.2	2.6	43.5	71.5	32.9	0.40	0.15

277H is a young Skyfall son that comes from a dam that has been a great female for us. Use this bull to improve fleshing ability and longevity in your cow herd.



## LOT 102

OSF MCCOY *Hugo Boss* 49S 206H DLF HYF IEF MSUDF

C03075680 OSF 206H FEBRUARY 6, 2020 POLLED

MCCOY 3J MATADOR 55M  
**MCCOY 55M ABSOLUTE 49S** DLF HYF IEF  
MCCOY 58G CONNIE 119L

PCL ZIRCON 719T 25Z DLF HYF IEF MSUDF MDF  
**OSF FULL EFFECT 25Z ET 121F** DLF HYF IEF MSUDF  
OSF TOTAL EFFECTS 58G 205T DLF HYF IEF

DOUBLE-U JED ET 3J  
MCCOY 397E SUSIE 6H  
RU 20X GALAXY 58G  
MCCOY 5X SABRINA 63B  
TH 122 71I VICTOR 719T DLF HYF IEF MDF  
PCL MISS JADE 657G ET 37T DLF HYF IEF  
RU 20X GALAXY 58G  
OSF RADIANCE 104N 224R

CE	BW	ADJ WW	ADJ YW	CE	BW	WW	YW	MILK	REA	MARB
U	77	822	1223	6.3	1.1	57.5	88.3	19.9	0.39	-0.03

206H combines ideal performance from birth to yearling with a good look and hair coat we expect. It will be interesting to see how his young dam will continue to be influential as was her donor dam. Homozygous Polled.

Recommended for heifers.



LOT 102 - 206H

## LOT 103

OSF MCCOY *Habanero* 14E 2126H DLF HYF IEF MSUDF

C03077919 OSF 2126H JANUARY 26, 2020 POLLED

NJW 73S W18 HOMETOWN 10Y ET DLF HYF IEF MDC  
**OLTN 10Y EXCALIBUR ET 14E** DLF HYF IEF MSUDF MDF  
TLELL 8R TICKLE 22T DLF HYF IEF

SHF TAHOE R117 T100 DLF HYF IEF MSUDF  
**HAROLDSON'S SARAH T100 59Y** DLF HYF IEF MSUDF  
HAROLDSON'S SARAH 68M 59T

SHF WONDER M326 W18 ET DLF HYF IEF MDC  
NJW P606 72N DAYDREAM 73S DLF HYF IEF  
TLELL 19M LITTLE ROCK 8R  
TLELL 8E KURLEY 22M  
SHF RIB EYE M326 R117 DLF HYF IEF  
SHF LADY 512 L73  
STAR AMERICA BNMHPH SS MKS 68M DLF HYF IEF  
HAROLDSON'S SARAH 014K 6P

CE	BW	ADJ WW	ADJ YW	CE	BW	WW	YW	MILK	REA	MARB
U	96	792	1203	-6.0	5.0	56.5	92.4	29.1	0.32	0.05

2126H continues to be an impressive individual at all stages of development. This homozygous polled, performance-oriented bull comes from a donor dam who has consistently produced progeny with extra hip shape and depth of rib. Maternal brothers have sold to Echo Valley Farm, BC and Donlar farms in ON.



LOT 103 - 2126H

## LOT 104

MCCOY 45E *Buckeye* 144H

C03078514 ZTM 144H MARCH 6, 2020 POLLED

NJW 73S W18 HOMETOWN 10Y ET DLF HYF IEF MDC  
**MCCOY 8Y ORIGIN 45E** DLF HYF IEF MSUDF MDC  
MCCOY 23U VICKIE 112Z

JDH 117R EQUITY 70Y ET DLF HYF IEF  
**MCCOY 70Y CONNIE 50C**  
MCCOY 719T CONNIE 20Z

SHF WONDER M326 W18 ET DLF HYF IEF MDC  
NJW P606 72N DAYDREAM 73S DLF HYF IEF  
BBSF 68R ULTIMATE 23U DLF HYF IEF  
MCCOY R117 VICKIE 31W  
SHF RIB EYE M326 R117 DLF HYF IEF  
JDH MS P606 BOOMER 20R  
TH 122 71I VICTOR 719T DLF HYF IEF MDF  
MCCOY 264P CONNIE 11T DLF HYF IEF

CE	BW	ADJ WW	ADJ YW	CE	BW	WW	YW	MILK	REA	MARB
U	98	753	1319	0.2	3.9	61.1	99.2	32.8	0.47	0.07

144H is a true performance bull that will sire calves that push down the scale in the fall. His dam, 50C, has an average weaning index of 113 on her last 3 calves. MD test pending...



LOT 104 - 144H





**LOT 105 - 276H**

## LOT 105

MCCOY 7222 *Magnum* 276H

C03075566 ZTM 276H APRIL 14, 2020 POLLED

EFBEEF TFL U208 TESTED X651 ET  
**RST X651 TESTED 7222**  
 RST MS 1010 BUILT TUFF 3154 DLF HYF IEF

ANL C HART100 TAHOE 86 ET 23B DLF HYF IEF MSUDF MDL  
**MCCOY 23B MAGGIE ET 70F** DLF HYF IEF  
 WALKER DRF JH LASS W193 17U338

EFBEEF FOREMOST U208 DLF HYF IEF  
 EFBEEF P606 MABEL R415  
 KT BUILT TUFF 1010  
 RST MS 7167 JOHN WAYNE 9155  
 SHF TAHOE R117 T100 DLF HYF IEF MSUDF  
 ANL 7N MAPLE 86R DLF HYF IEF  
 SHF WYATT P20 W193  
 LJR HAZEL 17U

CE	BW	ADJ WW	ADJ YW	CE	BW	WW	YW	MILK	REA	MARB
U	96	674	1158	2.4	4.7	67.3	103.3	28.8	0.22	0.08

276H is a goggle eyed, short marked bull that should produce extra thickness, fleshing ability, and strong hair coats.

## LOT 106

### Hereford x Gelbvieh OPEN REPLACEMENT HEIFERS

This is our fifth year offering Hereford-sired, open replacement heifers through this sale. There are a few less heifers this year as we decided to breed some of our purebred Gelbvieh females back to a Gelbvieh bull in order to re-build our foundation to continue offering an F1 product going forward. We have been overwhelmed by the value these F1 females have brought to our customer base. Therefore, we are putting in the time and effort to set up a breeding system to sustain this longer term and create a larger volume of heifers in the future. This year we will be offering just 6 groups of 3 heifers. All heifers have been vaccinated with Vista Once SQ and Vision 8 in the spring and fall of 2020 and received Ivermectin at that time as well. All heifers are pregnancy checked to be open.



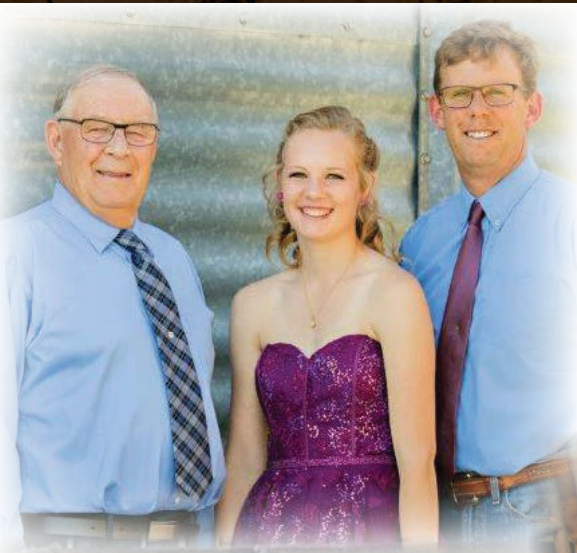
**F1 Female**

Two year old F1 females in production purchased from our 2018 sale



**Emma and Kalla with their F1 steers in the championship drive at Weyburn Fair**







# Notes



# Terms & Conditions

## *Terms...*

The terms of the sale are cash or cheque, payable at par at the sale location. The right of property shall not pass until after settlement has been made; no invoicing on buyers in attendance unless previous arrangements have been made. Every animal sells to the highest bidder and in cases of disputes the auctioneer's decision will be final. Announcements from the auction block will take precedence over the printed matter in the catalogue. Current exchange rates will be announced sale day. All monies are in Canadian funds.

## *Certificate of Registration...*

Each animal will carry papers issued by the applicable breed association. A certificate of registry duly transferred will be furnished to the buyer for each animal after payment has been made.

## *Health...*

All animals in the sale have met all necessary health requirements.

## *Guarantee...*

Each animal becomes the purchaser's risk immediately after the animal is sold. All animals in this sale will be sold under the terms and guarantees set forth by the applicable breed association with regards to health, freedom from defects and from both reproductive and specific genetic unsoundness.

## *Pedigree Estimates...*

Pedigree Estimates (PE) are created on the projected mating of the animal's sire and dam based on averages of the two, creating estimated values that do not hold the same accuracy of actual EPDs issued from the association and should be used as such.

## *Delivery...*

Assistance will be given in getting your purchases home. Each animal becomes the risk of the purchaser as soon as sold.

## *Liabilities...*

All persons attend the sale at their own risk. The sellers, facility owner, auctioneer and sale manager assume no liability, legal or otherwise, for any accidents that occur. It is understood that T Bar C Cattle Co. (2013) Ltd. is acting only as a medium between buyer and seller and is not responsible for any failure on the part of either party to live up to his obligations. Neither does T Bar C Cattle Co. (2013) Ltd. assume any financial obligations to collect or enforce collection of any monies between parties and any legal action that may in exceptional cases be taken must be between the buyer and the seller. T Bar C Cattle Co. (2013) Ltd. assumes no responsibility for any credit extended by the seller to the buyer. The buyer must look to the seller for fulfillment of all guarantees and representations made here under.

## *Phone, Mail, Wire Bids...*

Bidders unable to attend the sale may phone, wire or mail their bids and instructions to the sale manager, auctioneer or special representatives. Bids must be received in sufficient time prior to the sale.

## *Insurance...*

Agents will be in attendance to insure your purchases. We strongly recommend that insurance is purchased for full value.

## *Errors...*

All announcements at sale time, written or oral, supercede any written material in the catalogue.





Return Undeliverable  
Canadian Addresses to:

T Bar C Cattle Co Ltd.  
Box 2330  
Warman, SK, S0K 4S0



# ***OFFERING 105 BULLS***

---

***8** Charolais Two-Year-Olds*

***52** Charolais Yearlings*

***45** Hereford Yearlings*

Created By:

***Today's***  
*Publishing*